



PLUMBING SOLUTIONS

Pipe Thread Sealants

Solvent Cements

Primers and Cleaners

Nokorode®

Soldering Fluxes

Rectorshield™

Cool Braze™

Anti-Seize Compounds

PIPE JOINING



RECTORSEAL PIPE THREAD SEALANTS

RectorSeal No. 5®

Code	Description	Qty
25790	1-¾ oz.	24
25631	¼ pt.	24
25551	½ pt.	24
25431	1 pt.	12
25300	1 qt.	12
25271	1 gal.	4
Canada		
25001	¼ pt.	12
25002	½ pt.	8
25433	1 pt.	12



Certified to
NSF-61/ANSI-61
NSF-pw-dw-sw



FEATURES

- Non-hardening / Slow drying
- Lead free
- Smooth application
- 2 year shelf life
- Certified to NSF/ANSI/CAN 61

● Yellow - multi-purpose pipe thread sealant

APPLICATION • Lubricates and protects threaded pipe and fittings • Can be pressurized immediately up to 100 psi for piping up to 2" diameter • Ideal for a wide variety of fluids and gases including potable water

RECOMMENDED FOR

- Galvanized Steel • Iron • Brass • Copper • Aluminum
- Stainless Steel • Polyethylene • RTRP • PVC



RECTORSEAL PIPE THREAD SEALANTS

Continued

RectorSeal T Plus 2®

Code	Description	Qty
23710	1-¾ oz.	24
23631	¼ pt.	24
23551	½ pt.	24
23431	1 pt.	12
23391	1 qt.	12
Canada		
23001	¼ pt.	12
23002	½ pt.	8
23435	1 pt.	12



FEATURES

- Non-hardening
- Lead free
- 2 year shelf life
- Certified to NSF/ANSI/CAN 61

● White - PTFE enriched pipe thread sealant

APPLICATION • Contains PTFE & synthetic fibers for superior performance • Can be pressurized immediately following application

RECOMMENDED FOR

- Galvanized Steel • Iron • Brass • Copper • Aluminum
- Stainless Steel • Polyethylene • RTRP • PVC • CPVC • ABS



RectorSeal Tru-Blu™

Code	Description	Qty
31780	1-¾ oz.	24
31631	¼ pt.	24
31551	½ pt.	24
31431	1 pt.	12
31300	1 qt.	12
Canada		
31001	¼ pt.	12
31002	½ pt.	8
31003	1 pt.	12



FEATURES

- Fast drying / Flexible set
- Contains PTFE
- Lead free
- 2 year shelf life
- Certified to NSF/ANSI/CAN 61

● Blue - vibration resistant pipe thread sealant

APPLICATION • For high vibration environments such as refrigeration and industrial applications • Designed for sealing vibration prone NPT connections

- RECOMMENDED FOR** • Galvanized Steel • Iron • Brass • Copper • Aluminum • Stainless Steel • PVC • Polyethylene • Reinforced fiberglass



FBC™ System Compatible indicates that this product has been tested, and is monitored on an ongoing basis, to assure its chemical compatibility with FlowGuard Gold®, BlazeMaster® and Corzan® piping systems and products made with TempRite® Technology. The FBC System Compatible Logo, FBC™, FlowGuard Gold®, BlazeMaster®, Corzan® and TempRite® are trademarks of Lubrizol Advanced Materials, Inc. or its affiliates.



RECTORSEAL PIPE THREAD SEALANTS

Continued

No. 5[®] Special

Code	Description	Qty
26551	½ pt.	24
26431	1 pt.	12
26390	1 qt.	12
26112	55 gal.	1



FEATURES

- Low temperature application
- Non-hardening
- Lead free
- 2 year shelf life

○ Gray - low odor pipe thread sealant

APPLICATION • Non-staining, non-setting for use on gas piping or gas detection equipment • Can be pressurized immediately

RECOMMENDED FOR • Galvanized Steel • Iron • Brass • Copper • Aluminum • Stainless Steel • Polyethylene • RTRP • PVC



See ordering chart for container sizes available

No. 5[®] Sub-Zero

Code	Description	Qty
27731	¼ pt.	24
27651	½ pt.	24
27541	1 pt.	12
27460	1 qt.	12



FEATURES

- Low temperature application -35°F
- All weather formula
- Lead free
- 2 year shelf life

● White- low temperature, low odor pipe thread sealant

APPLICATION • Odorless, non-staining, low temperature application • Brushable to -35°F • Can be pressurized immediately

RECOMMENDED FOR

- Galvanized Steel
- Iron • Brass • Copper
- Aluminum • Stainless Steel
- Polyethylene • RTRP • PVC



BLUE+[™]

Code	Description	Qty
31633	¼ pt.	24
31553	½ pt.	24
31433	1 pt.	12



LISTED
PIPE JOINT COMPOUND
MH12259

FEATURES

- Non-hardening
- Lead Free
- 2 year shelf life
- Certified to NSF/ANSI/CAN 61

● Blue - PTFE Enriched Non-hardening Thread Pipe Sealant

APPLICATION • Use on lines carrying potable water (hot or cold), DWV, natural gas, LPG, compressed air, and most other industrial gases. • Up to 10,000 psi liquid and 2,000 psi gases. • Temperature service range of -15°F to 350°F. • Not recommended for oxygen.

RECOMMENDED FOR

- Iron
- Galvanized Steel • Stainless Steel • Brass • Copper • Aluminum • Polyethylene • PVC • ABS • CPVC • Reinforced Fiberglass



FBC[™] System Compatible indicates that this product has been tested, and is monitored on an ongoing basis, to assure its chemical compatibility with FlowGuard Gold[®], BlazeMaster[®] and Corzan[®] piping systems and products made with TempRite[®] Technology. The FBC System Compatible Logo, FBC[®], FlowGuard Gold[®], BlazeMaster[®], Corzan[®] and TempRite[®] are trademarks of Lubrizol Advanced Materials, Inc. or its affiliates.

RECTORSEAL PIPE THREAD SEALANTS

Continued

No. 7

Code	Description	Qty
17432	1 pt.	4

FEATURES

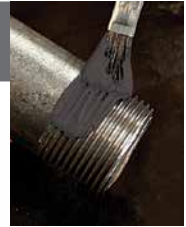
- Soft set
- Lead free
- 2 year shelf life



WARNING: This product can expose you to chemicals including Methyl Isobutyl Ketone, which is known to the State of California to cause cancer. For more information, go to www.P65Warnings.ca.gov.

● Black - corrosive chemical pipe thread sealant

APPLICATION • Slow drying sealant for use with lines carrying corrosive chemicals: diluted acids, caustics and other chemical solutions **RECOMMENDED FOR** • Galvanized Steel • Iron • Brass • Copper • Aluminum • Stainless Steel



No. 21

Code	Description	Qty
28651	½ pt.	24
28541	1 pt.	12



FEATURES

- Black sealant
- Multi-purpose
- Lead free
- 2 year shelf life

● Black - slow dry/soft set pipe thread sealant

APPLICATION • Soft set sealant for lines carrying a wide range of liquids and gases • For applications where black color is preferred • Brushable from 20°F to 140°F

RECOMMENDED FOR

- Galvanized Steel • Iron • Brass • Copper
- Aluminum • Stainless Steel
- Polyethylene • RTRP • PVC



PTFE Tape

Code	Description	Qty
35942	½" x 260"	12
35943	½" x 520"	12
35944	½" x 1296"	12
35946	¾" x 520"	12
35947	¾" x 1296"	12
35949	1" x 520"	12
66687	½" x 260"	100
66688	½" x 520"	100
66689	½" x 260" (yellow)	100

100% pure PTFE pipe thread sealant tape

APPLICATION • Resistant to most liquids and gases as it is completely inert • Available in a wide variety of sizes





RECTORSEAL LOW-VOC SOLVENT CEMENTS

Apply all solvent cements in conjunction with RectorSeal primer

Pete™ 602L

Code	Description	Qty
55922	¼ pt.	24
55924	½ pt.	24
55926	1 pt.	12
55928	1 qt.	12
55916	1 gal. wide mouth	4



pw-dwv-sw

FEATURES

- LEED compliant
- NSF approved for potable water
- 3 year shelf life
- Meets ASTM D2564
- Low-VOC

WARNING: This product can expose you to Tetrahydrofuran, which is known to the State of California to cause cancer. For more information go to: www.P65Warnings.ca.gov.

○ Clear - medium body PVC solvent cement

APPLICATION • Polyvinyl chloride (PVC) solvent cement used for joining PVC pipe and socket-type fittings which meet Class 12454 as defined in ASTM specification D1784 • For up to 6" for Schedule 40; 4" for Schedule 80

RECOMMENDED FOR • Potable water
• Pressure pipe • Conduit • Sewers
• DWV systems



RECTORSEAL LOW-VOC SOLVENT CEMENTS

Continued

Gene™ 404L

○ Clear - regular body PVC solvent cement

Code	Description	Qty
55901	¼ pt.	24
55902	½ pt.	24
55904	1 pt.	12
55906	1 qt.	12
55908	1 gal.	4



pw-dwv-sw

FEATURES

- Fast setting formula
- LEED compliant
- NSF approved for potable water
- 3 year shelf life
- Meets ASTM D2564
- Low-VOC

WARNING: This product can expose you to Tetrahydrofuran, which is known to the State of California to cause cancer. For more information go to: www.P65Warnings.ca.gov.

APPLICATION • Polyvinyl chloride (PVC) solvent cement used for joining PVC pipe and socket-type fittings which meet Class 12454 as defined in ASTM specification D1784

- Schedule 40 up to 2" pressure; up to 4" non-pressure pipe (DWV) • ABS to PVC non-pressured transition joints

RECOMMENDED FOR • Potable water

- Pressure pipe • Conduit
- Sewers • DWV systems



Gold™ 844L

○ Clear - heavy body PVC solvent cement

Code	Description	Qty
55951	½ pt.	24
55952	1 pt.	12
55954	1 qt.	12
55955	1 gal. wide mouth	4



pw-dwv-sw

FEATURES

- Excellent gap filling
- LEED compliant
- NSF approved for potable water
- 3 year shelf life
- Meets ASTM D2564
- Low-VOC

WARNING: This product can expose you to Tetrahydrofuran, which is known to the State of California to cause cancer. For more information go to: www.P65Warnings.ca.gov.

APPLICATION • Polyvinyl chloride (PVC) solvent cement used for joining PVC pipe and socket-type fittings which meet Class 12454 as defined in ASTM specification D1784

- For pipe up to 12" Schedule 40 and Schedule 80

RECOMMENDED FOR

- Potable water • Pressure pipe
- Conduit • Sewers • DWV systems



RECTORSEAL LOW-VOC SOLVENT CEMENTS

Continued

Homer™ 828L

Code	Description	Qty
55961	1 pt.	12
55963	1 qt.	12
55964	1 gal. wide mouth	4



FEATURES

- Superior bonding strength
- LEED compliant
- NSF approved for potable water
- 3 year shelf life
- Meets ASTM D2564, CSA B137.3, CSA B181.2
- Low-VOC



WARNING: This product can expose you to Tetrahydrofuran, which is known to the State of California to cause cancer. For more information go to: www.P65Warnings.ca.gov.

○ Gray - heavy body PVC solvent cement

APPLICATION • Polyvinyl chloride (PVC) solvent cement used for joining PVC pipe and socket-type fittings which meet Class 12454 as defined in ASTM specification D1784 • For pipe up to 12" Schedule 40 and Schedule 80 • Remains stable from 40°F to 110°F

RECOMMENDED FOR

- Potable water • Pressure pipe
- Conduit • Sewers • DWV systems



Arctic™ 616L

Code	Description	Qty
55919	1 pt.	12
55948	1 qt.	12
55953	1 gal. wide mouth	4



FEATURES

- Formulated for use in cold weather
- LEED compliant
- NSF approved for potable water
- 3 year shelf life
- Meets ASTM D2564
- Low-VOC
- State of Wisconsin Approved



WARNING: This product can expose you to Tetrahydrofuran, which is known to the State of California to cause cancer. For more information go to: www.P65Warnings.ca.gov.

○ Clear - medium body PVC solvent cement

APPLICATION • Premium polyvinyl chloride (PVC) solvent cement used for joining PVC pipe and socket-type fittings which meet Class 12454 as defined in ASTM specification D1784 • Pipe up to 6" Schedule 40; Up to 4" Schedule 80 • Remains stable from 0°F to 120°F

RECOMMENDED FOR

- Potable water • Pressure pipe
- Conduit • Sewers
- DWV systems



RECTORSEAL LOW-VOC SOLVENT CEMENTS

Continued

Charlie™ 412L

Code	Description	Qty
55956	¼ pt.	24
55957	½ pt.	24



pnw-dwv-sw

FEATURES

- For CPVC pipe
- LEED compliant
- 3 year shelf life
- Meets ASTM F493 specs
- Low-VOC
- NSF approved for potable water

Orange - regular body CPVC solvent cement

APPLICATION • Chlorinated polyvinyl chloride (CPVC) solvent cement for joining CPVC pipe, tubing and socket-type fittings which meet Class 23467 as defined in ASTM specification D1784 • For use on CPVC pipe up to 2" Schedule 40

RECOMMENDED FOR

- Potable water • Pressure pipe
- DWV systems

WARNING: This product can expose you to Tetrahydrofuran, which is known to the State of California to cause cancer. For more information go to: www.P65Warnings.ca.gov.



Heavy Duty 811L

Code	Description	Qty
55967	1 pt.	12
55968	1 qt.	12



pnw-dwv-sw

FEATURES

- For CPVC pipe
- LEED compliant
- 3 year shelf life
- Meets ASTM F493 specs
- Low-VOC
- NSF approved for potable water

Orange - heavy body CPVC solvent cement

APPLICATION • Chlorinated polyvinyl chloride (CPVC) solvent cement for joining CPVC pipe, tubing and socket-type fittings which meet Class 23467 as defined in ASTM specification D1784 • For use on CPVC pipe up to 12" Schedule 40 and Schedule 80

RECOMMENDED FOR

- Potable water • Pressure pipe
- DWV systems

WARNING: This product can expose you to Tetrahydrofuran, which is known to the State of California to cause cancer. For more information go to: www.P65Warnings.ca.gov.



Mike™ 425L

Code	Description	Qty
55969	¼ pt.	24
55970	½ pt.	24
55973	1 pt.	12
55974	1 qt.	12

FEATURES

- Multi purpose
- LEED compliant
- 3 year shelf life
- Low-VOC

Amber - medium body multi purpose solvent cement

APPLICATION • For use on PVC, CPVC and ABS plastic pipe and socket-type fittings • Can be used on transitions joints to join PVC to CPVC and PVC to ABS • Pipe up to 6" Schedule 40

RECOMMENDED FOR

- Water • Pressure pipe
- DWV systems

WARNING: This product can expose you to Tetrahydrofuran, which is known to the State of California to cause cancer. For more information go to: www.P65Warnings.ca.gov.



LOW-VOC SPECIALTY SOLVENT CEMENTS

Dura-Gold™ 627L

● Gold - Medium body CPVC solvent cement

Code	Description	Qty
55992	½ pt.	24
55998	1 pt.	12



pw-dwv-sw

FEATURES

- One-step, no primer needed*
- LEED compliant
- 3 year shelf life
- Meets ASTM F493 specs
- Low-VOC
- NSF approved for potable water

*when code allows

APPLICATION • Chlorinated polyvinyl chloride (CPVC) solvent cement for joining FlowGuard Gold® CPVC and fittings • All schedules and classes up to 2" Schedule 40

RECOMMENDED FOR

- All CPVC pipe • Potable water
- Pressure pipe • DWV systems

*FlowGuard Gold is a licensed trademark of The Lubrizol Corporation



WARNING: This product can expose you to Tetrahydrofuran, which is known to the State of California to cause cancer. For more information go to: www.P65Warnings.ca.gov.



Hot™ 203L

● Blue - medium body PVC solvent cement

Code	Description	Qty
55988	¼ pt.	24
55989	½ pt.	24
55990	1 pt.	12
55993	1 qt.	12
55994	1 gal. wide mouth	4



pw-dwv-sw

FEATURES

- Very fast drying
- Excellent in cold weather
- LEED compliant
- 3 year shelf life
- Meets ASTM D2564
- Low-VOC
- NSF approved for potable water

APPLICATION • Polyvinyl chloride (PVC) solvent cement joins both rigid and flexible PVC pipe and socket-type fittings which meet Class 12454 as defined in ASTM specification D1784 • For all rigid PVC classes up to 6" Schedule 40 and 4" Schedule 80

RECOMMENDED FOR

- Irrigation
- Potable water
- Pressure pipe • Conduit
- Sewers • DWV systems
- ENT



WARNING: This product can expose you to Tetrahydrofuran, which is known to the State of California to cause cancer. For more information go to: www.P65Warnings.ca.gov.



PVC Electrical Conduit 633L

○ Clear/Gray - medium body solvent cement

Code	Description	Qty
55980	½ pt. - clear	24
55983	1 pt. - clear	12
55985	1 qt. - clear	12
55996	1 qt. - gray	12
55979	1 gal. wide mouth clear	4



pw-dwv-sw

FEATURES

- Conduit types I & II
- LEED compliant
- 3 year shelf life
- Meets ASTM D2564
- Low-VOC
- NSF approved for potable water

APPLICATION • Clear or gray to match conduit color • Thick formula to reduce runoff • Up to 6" Schedule 40 and Schedule 80

RECOMMENDED FOR

- PVC conduit



WARNING: This product can expose you to Tetrahydrofuran, which is known to the State of California to cause cancer. For more information go to: www.P65Warnings.ca.gov.



Gray

Clear



RECTORSEAL PRIMERS & CLEANERS

Jim™ PR-1L

Code	Description	Qty
55910	¼ pt.	24
55912	½ pt.	24
55914	1 pt.	12
55918	1 qt.	12
55920	1 gal.	4



nsf.com

FEATURES

- Fast acting
- Superior bonding
- LEED compliant
- 3 year shelf life
- Meets ASTM F656
- NSF approved for potable water
- Low-VOC

○ Purple - Low-VOC hi-etch primer

APPLICATION • Prepares surfaces for superior bonding strength • For use on PVC and CPVC pipe, tubing and socket-type fittings in both Schedule 40 and Schedule 80

RECOMMENDED FOR

- Potable water • Pressure pipe • Conduit
- Sewers • DWV systems • Irrigation



RECTORSEAL PRIMERS & CLEANERS

Clear PR-2L

Code	Description	Qty
55972	1 pt.	12
55981	1 qt.	12
55982	1 gal.	4



pw-dwv-sw

FEATURES

- Fast acting
- Superior bonding
- LEED compliant
- 3 year shelf life
- Low-VOC
- Meets ASTM F656
- NSF approved for potable water

○ Clear - Low-VOC hi-etch primer

APPLICATION • Prepares surfaces for superior bonding strength • For use on PVC and CPVC pipe, tubing and socket-type fittings in both Schedule 40 and Schedule 80

RECOMMENDED FOR

- Potable water • Irrigation
- Pressure pipe • Conduit
- Sewers • DWV systems



Also available in gallon can.

Bill™ PR-3

Code	Description	Qty
55705	1 pt.	12
55707	1 qt.	12



pw-dwv-sw

FEATURES

- PVC & CPVC systems
- Etches & penetrates
- 3 year shelf life
- Low-VOC
- LEED compliant
- Meets ASTM F656
- NSF approved for potable water

○ Clear - Low-VOC hi-etch primer

APPLICATION • Primer for use on all PVC and CPVC pipe, tubing and socket-type fittings to etch and penetrate the surface increasing body strength • Use with all sizes and classes in both Schedule 40 and Schedule 80

RECOMMENDED FOR

- Pressure pipe
- Conduit • DWV systems • Sewers
- Potable water • Irrigation



Sam™ CL-3L

Code	Description	Qty
55929	¼ pt.	24
55930	½ pt.	24
55932	1 pt.	12
55934	1 qt.	12
55936	1 gal.	4

FEATURES

- Fast acting
- Safe for potable water
- 3 year shelf life
- Low-VOC

○ Clear - cleaner

APPLICATION • Clear cleaner for dissolving grease and dirt to prepare bonding surfaces for solvent cementing • Use for PVC, CPVC and ABS pipe, tubing and socket-type fittings Schedule 40 and Schedule 80

RECOMMENDED FOR

- Potable water • Pressure pipe
- Sewers • Conduit • DWV systems
- Irrigation



Also available in gallon can.

GENERAL SERVICE RECOMMENDATIONS

Solvent Cements • Cleaners • Primers

S O L V E N T C E M E N T S						
Product Name	Pete 602L	Gene 404L	Gold 844L	Homer 828L	Arctic 616L	
Application	PVC	PVC & Transition Joints	PVC	PVC	PVC	
Color	Clear	Clear	Clear	Gray	Clear	
Max. Pipe Size Schedule 40	6"	2" Pressure 4" DWV	12"	12"	6"	
Max. Pipe Size Schedule 80	4"	—	12"	12"	4"	
Body Type	Medium Body	Regular Body	Heavy Body	Heavy Body	Medium Body	
Cure Time	Fast Set	Fast Set	Medium Set	Medium Set	Fast Set	
ASTM	D2564	D2564	D2564	D2564	D2564	

S O L V E N T C E M E N T S						
Product Name	Charlie 412L	Heavy Duty 811L	Mike 425L	Dura-Gold 627L	Hot 203L	PVC Electrical Conduit 633L
Application	CPVC	CPVC	Multipurpose PVC/CPVC	CPVC	PVC	PVC
Color	Orange	Orange	Amber	Gold	Blue	Gray / Clear
Max. Pipe Size Schedule 40	2"	12"	6" DWV 6" Pressure	2"	6"	6"
Max. Pipe Size Schedule 80	—	12"	—	-	4"	6"
Body Type	Regular Body	Heavy Body	Medium Body	Medium Body	Medium Body	Medium Body
Cure Time	Fast Set	Medium Set	Fast Set	Fast Set	Very Fast Set	Fast Set
ASTM	F493	F493	—	F493	D2564	D2564

C L E A N E R S & P R I M E R S				
Product Name	Sam CL-3L	Jim PR-1L	Clear PR-2L	Bill PR-3
Product Type	Cleaner	Primer	Primer	Primer
Application	PVC, CPVC, ABS	PVC, CPVC	PVC, CPVC	PVC, CPVC
Color	Clear	Purple	Clear	Clear
ASTM		F656	F656	F656



NOKORODE PASTE FLUXES

Nokorode® Aqua Flux™

Code	Description	Qty
74047	4 oz.	24
74046	16 oz.	12



FEATURES

- Lead free
- Creamy, smooth paste
- Safe for potable water systems
- Certified to NSF/ANSI/CAN 61
- Complies with AB1953 requirements

Water washable flux

APPLICATION • Superior wetting ability; Allows solder to flow easily and uniformly into joints • Lead free

RECOMMENDED FOR

- Solid wire solders 95/5, 60/40, 50/50 and 40/60 • For use with the silicone family of metal alloy products



Nokorode® Regular

Code	Description	Qty
14000	1.7 oz.	48
14010	4 oz.	24
14020	8 oz. tool box	24
14030	1 lb.	12



FEATURES

- Lead Free
- Cleans & fluxes all at one time
- Safe for potable water systems
- Certified to NSF/ANSI/CAN 61
- Meets OF 506 Type 1A & A-A-51145, MIL-F-4995, MIL-FS-6872A

Multi-purpose paste flux

APPLICATION • All purpose, soft soldering paste flux with a special oil base that protects the solder against corrosive attack • Non-aggressive formula. Ideal for copper and brass fittings

RECOMMENDED FOR • All solder alloys including 95/5 and lead free solders



NOKORODE PASTE & SPECIALTY FLUXES

Continued

Nokorode® Hot Weather

Does not liquefy in hot temperatures

Code	Description	Qty
14820	8 oz. tool box	24
14830	1 lb.	12

FEATURES

- Lead Free
- Cleans & fluxes all at one time
- Meets OF 506 Type 1A & A-A-51145, MIL-F-4995, MIL-FS-6872A

APPLICATION • Formulated to remain firm and stable in higher temperatures
• Non-aggressive formula for use on copper and brass fittings

RECOMMENDED FOR • All solder alloys including 95/5 and lead free solders



Nokorode® Cold Weather

Does not harden in cold temperatures

Code	Description	Qty
14720	8 oz. tool box	24
14730	1 lb.	12

FEATURES

- Lead Free
- Cleans & fluxes all at one time
- Meets OF 506 Type 1A & A-A-51145, MIL-F-4995, MIL-FS-6872A

APPLICATION • Formulated to stay soft and sticky in cold weather • Low corrosivity, scorching and spattering • Works to deliver a strong, leak-free joint

RECOMMENDED FOR • All solder alloys including 95/5 and lead free solders



Nokorode® Pre-Tinning

95/5 paste flux

Code	Description	Qty
14115	8 oz. tool box	24

FEATURES

- Lead free
- Cleans, pre-tins and fluxes
- Excellent wetting ability

APPLICATION • Formulated with 95/5 tin/antimony which pre-tins before wire solder is applied • Excellent for use on large diameter fittings or faster soldering of smaller diameter fittings

RECOMMENDED FOR • 95/5 • 50/50
• Common metals (copper, tin, zinc, nickel and sheet lead)



Nokorode® C-Flux®

High quality flux

Code	Description	Qty
74026	3 oz.	48
74025	12 oz.	24

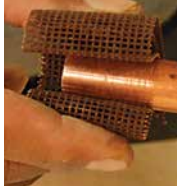
FEATURES

- Lead free
- Blend of 95/5 tin/antimony

APPLICATION • Soft soldering, multi-purpose paste that contains a blend of flux and powdered solder (95/5 tin/antimony) • Cleans, fluxes and pre tins in one operation

RECOMMENDED FOR • 95/5 • 60/40
• 50/50 • 40/60 • All solderable metals (copper, tin, zinc, nickel and sheet lead)





SOLDERING ACCESSORIES

Rectorshield™

Heat absorption paste

Code	Description	Qty
83554	11 oz. tube	24

FEATURES

- Biodegradable*
- Odorless

APPLICATION • A heat absorption paste to help prevent damage to sensitive controls, valves, plastic faucet parts, equipment and other soldered connections • Reduces heat transfer by absorbing thermal energy from heat and flames

RECOMMENDED FOR

- Copper • Other types of metal pipe



Cool Braze™

Reusable Heat Absorption Putty

Code	Description	Qty
83562	8 oz.	6

FEATURES

- Reusable for life
- Blocks direct and conductive heat
- Stops the transfer of heat up to 3000°F (1650°C)
- Non-Toxic
- Non-Flammable
- Odor free
- Biodegradable*
- Can be used as a jiggig tool
- Stops warpage on thin metal

APPLICATION • Block direct and conductive heat transfer on any surface or metals when brazing, soldering or welding • Protect heat sensitive parts and eliminate discoloration, warpage and distortion • Hold, align and jig parts for brazing, soldering or welding • Works as a heat shield when protecting valves and fittings • Effective while using MAPP gas, Oxy-Acetylene, MIG, TIG, Arc and propane torches

RECOMMENDED FOR • All types of surfaces and metals, including joints, valves, fittings, composite panels, copper, brass, rubber and plastics



Regular Sandcloth

Standard abrasion

Code	Description	Qty
61720	10 yd.	50
61730	25 yd.	20

FEATURES

- Sharp, aluminum-oxide quality sandcloth
- Strong, flexible cloth backing

APPLICATION • Ideal for the preparation of copper tubing and fittings where water and solvents are not a major factor

Acid and fitting brushes available



Open Mesh Sandcloth

Reusable waterproof abrasion

Code	Description	Qty
61760	5 yd.	50
61759	10 yd.	50

FEATURES

- Reusable
- 100% waterproof
- Tear-resistant nylon backing

APPLICATION • A premium abrasive, waterproof material with top quality performance • If the material becomes loaded with fillings, simply rinse in water and tap out



* Contains the best available biodegradable surfactants and detergents.

ANTI-SEIZE COMPOUNDS

Break-Out™

Code	Description	Qty
73551	8 oz.	12
73861	12 oz. aerosol	12
73431	1 lb.	12

FEATURES

- Will not wash off
- Contains no lead
- Exceeds military spec MIL-PRF-907F

High temperature anti-seize

APPLICATION • Fine copper flakes and graphite particles dispersed in a high temperature, corrosion resistant grease for use on bolts, nuts and screws
• Resists seizure for easy breakout up to 1800°F • Color: bronze

RECOMMENDED FOR • Threaded connections • Pump housings • Flanges
• Studs • Exhaust manifold bolts
• Compressor heads



Food Grade

Code	Description	Qty
73931	1 lb.	12

FEATURES

- Food Grade
- Use with potable water
- Conforms to FDA regulation CFR21 Part 178.3570
- Conforms to military specification MIL-PRF-907F

Food contact anti-seize and lubricant

APPLICATION • Specifically for use when incidental food contact is possible • PTFE for added lubricity
• Prevents rust, corrosion, seizing and galling of metal compounds
• Color: white

RECOMMENDED FOR

- Service rating -65°F to 1800°F



Copper-Rich™

High temperature anti-seize and lubricant

Code	Description	Qty
72851	8 oz.	12
72841	1 lb.	12

FEATURES

- Highly conductive
- Exceeds military spec MIL-PRF-907F
- Color: copper

APPLICATION • Pure micro-sized copper flakes dispersed in a non-melt, high temperature grease • Resists seizure

RECOMMENDED FOR • All metal connections including stainless steel to 1800°F • Ideal for use where electrical conductivity is important



Nickel-Rich™

High temperature anti-seize and lubricant

Code	Description	Qty
73851	8 oz.	12
73831	1 lb.	12

FEATURES

- Will not wash off
- Brushable down to 0°F
- Exceeds military spec MIL-PRF-907F
- Color: silver

WARNING: This product can expose you to Nickel, which is known to the State of California to cause birth defects or other reproductive harm. For more information, go to www.P65Warnings.ca.gov.

APPLICATION • Pure nickel flakes dispersed in a high temperature, corrosion resistant grease • Resists attack by acidic and caustic chemicals

RECOMMENDED FOR • Bolts • Heat exchangers • Manifolds • Furnace hinges • Manway studs



Moly-Rich™

High temperature corrosion resistant anti-seize and lubricant

Code	Description	Qty
71431	1 lb.	12

FEATURES

- Will not wash off
- Not affected by vibration
- Exceeds military spec MIL-PRF-907F
- Low coefficient of friction allows easy breakout up to 1050°F
- Color: blue

APPLICATION • Fine Molybdenum disulfide, graphite particles and extreme pressure additives dispersed in a high temperature, corrosion resistant grease

RECOMMENDED FOR • Steel • Aluminum • Stainless steel • Cast iron • Titanium • Copper • Brass • Alloys • Plastic • Gasket materials





PLUMBING

SOLUTIONS

D
W
V

Clean Check®

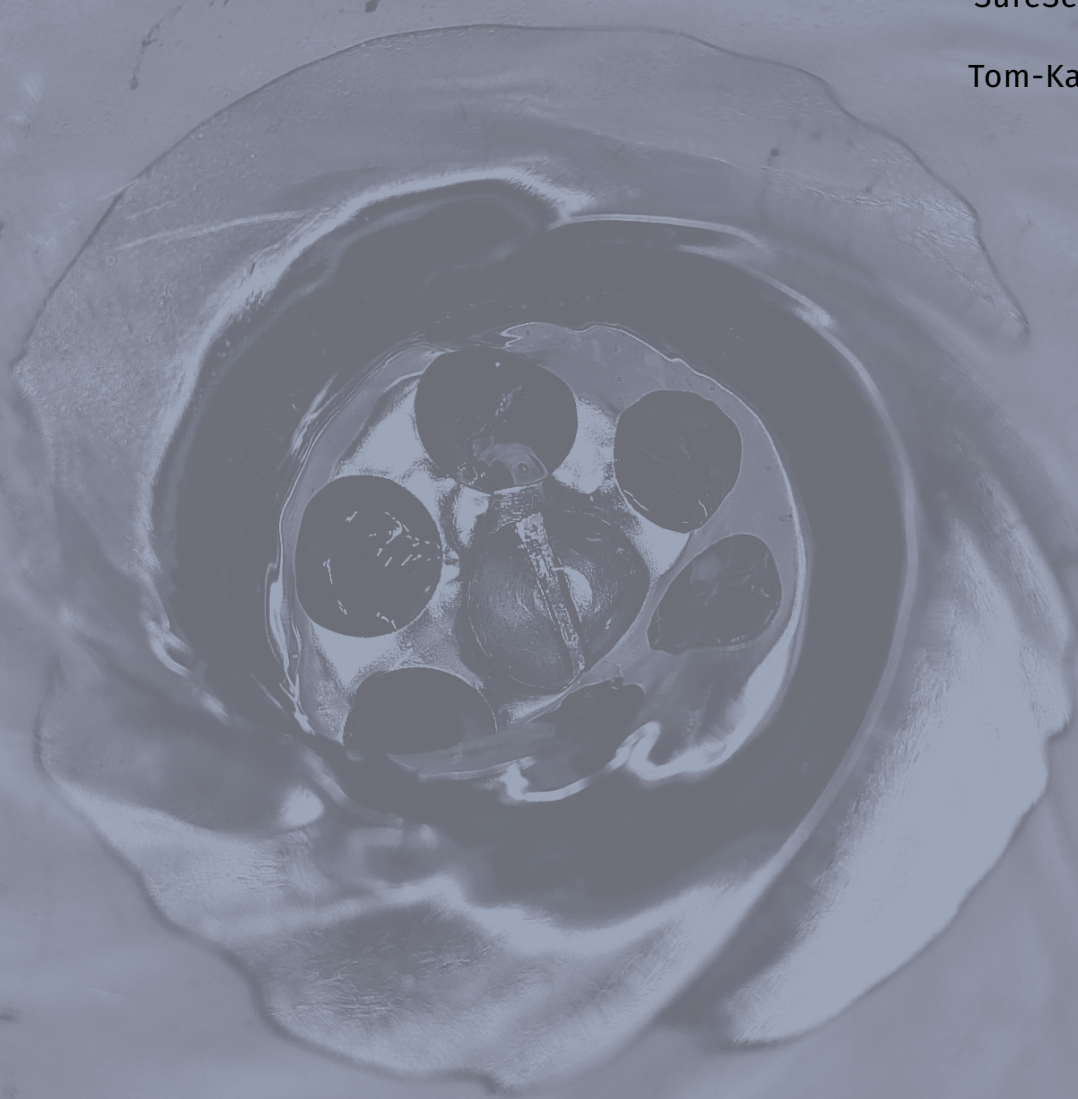
Hubsett™

Magic Vent®

G-O-N®

SureSeal®

Tom-Kap™





EXTENDED BACKWATER VALVE

Inground backwater control.



- Prevents the reverse flow of backwater into a structure as a result of a plugged sewer system, excess volume in the system or ground water flooding.

- Installs discretely outside, below grade, between the structure and the standard clean-out.

- Lifts up and out of housing for above ground maintenance and inspection.

▲
Ground level access.

Inground flapper eliminates costly manhole
▼

Up to 12' below grade

Waste water flow from structure.
(Flapper opens)

Reverse backwater flow from sewer line.
(Flapper seals closed)

Action videos and full details
@ rectorseal.com/cleancheck



DWV SOLUTIONS

Clean Check®

Extendable Backwater Valve Kit



PVC



ABS



STATE OF
WISCONSIN
APPROVED

Code	Description	Qty
97023	3" PVC	1
97024	4" PVC	1
97026	6" PVC	1
97034	4" PVC w/adaptor & plug	1
97003	3" ABS	1
97004	4" ABS	1
97014	4" ABS w/adaptor & plug	1
96980	3"-4" flapper	1
96983	6" flapper	1
97022	3"-4" PVC rebuild kit	1
97025	6" PVC rebuild kit	1

Application • Prevents sewage backup into plumbed structures as a result of a plugged sewer system, excess volume in the system or groundwater flooding

Recommended for • PVC • ABS

FEATURES

- No manhole required
- Installs discretely outside - up to 12' below ground level
- Above ground outdoor maintenance accessibility eliminates hidden access indoor applications, and the sewer odor and mess of indoor maintenance



Lower Collar with Flapper. 3" and 4" collars accept both 2" and 4" standard pipe 6" Clean Check collars accept standard 4" pipe.

Optional
Clean-out with
adapter plug ▶

Replaceable
75 PSI flapper



Snap-in, pull-out flapper

Available in 3", 4" and 6" sizes ▶

◀ Valve Body

◀ Upper Collar

DWV SOLUTIONS

Continued

Hubsett™

Code	Description	Qty
97050	3" ABS	12
97051	3" PVC	12
97052	4" ABS	12
97053	4" PVC	12
97063	4" PVC w/ hub & spigot	12



FEATURES

- Holds pressure every time
- Safe to use
- No pump or special tools needed
- Test with air or water
- 12 ft. cord
- State of Wisconsin approved

Test coupling

APPLICATION • Uniquely designed coupling and test device all-in-one • Allows the building's drain waste and vent system to be connected to the sewer line prior to the initial test • Easily removed with one quick pull on the release cord

RECOMMENDED FOR • ABS • PVC
Includes • Dome • Coupling • Float



Tom-Kap™

Code	Description	Qty
97481	2" PVC	24
97483	3" PVC	24
97484	4" ABS	24
97485	4" PVC	24



FEATURES

- Reduces installation cost
- Simplifies rough-in

Flush-fit cleanout adapter & plug

APPLICATION • Threaded adapter cements inside the pipe, providing a flush-finished cleanout for DWV systems

RECOMMENDED FOR • Schedule 40 • SDR-35
• Foam core

Includes • Top fitting • Cap





DWV SOLUTIONS

Continued

G-O-N®

Code	G-O-N kit	Qty
82701	2 in.	2
82702	3 in.	2
82704	4 in.	2
82705	6 in.	2
82707	8 in.	2
82713	10 in.	1
82715	12 in.	1

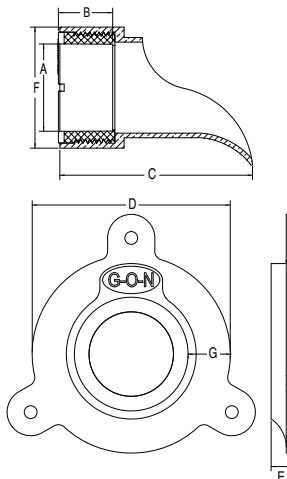
Code	Dura G-O-N kit	Qty
82763	3 in.	1
82764	4 in.	1
82766	6 in.	1

Code	Bird Screen*	Qty
82720	2 in.	1
82723	3 in.	1
82725	4 in.	1
82727	6 in.	1
82730	8 in.	1
82733	10 in.	1
82735	12 in.	1

*Fits both G-O-N and Dura G-O-N
US Patent No 7,618,067

WARNING: This product can expose you to chemicals including Lead, which is known to the State of California to cause cancer, birth defects or other reproductive harm. For more information, go to www.P65Warnings.ca.gov.

SPECIFICATIONS



Glue-on nozzle installs directly onto PVC drain pipe

APPLICATION • G-O-N provides easier installation of downspout nozzle • PVC insert allows quick gluing.
• Eliminates the need for coordinating additional site work with masonry or stucco crews.

Action videos and full details @ rectorseal.com/gon



Caulk wall opening.



Anchor escutcheon.



Measure/cut pipe.



Solvent weld nozzle onto pipe and into escutcheon.
Dura G-O-N requires the mounting notch in the escutcheon and the nozzle be aligned for proper contact.

G-O-N	Approx. weight in lbs.	A Inside diameter	B Hub depth	C Nozzle depth	D Escutcheon width	E Escutcheon depth	F Overall dimension	G Escutcheon width
2"	3	2.39"	1.5"	5.25"	5.75"	.50"	3.25"	1.25"
3"	5	3.52"	1.5"	5.37"	7.00"	.57"	4.50"	1.25"
4"	7	4.52"	1.5"	5.37"	8.00"	.57"	5.50"	1.25"
6"	10	6.65"	1.5"	5.62"	10.25"	.57"	7.50"	1.25"
8"	13	8.65"	1.5"	5.62"	12.37"	.57"	10.00"	1.25"
10"	21	10.78"	2.5"	6.50"	14.50"	.57"	12.00"	1.25"
12"	26	12.78"	2.5"	7.50"	16.50"	.50"	14.00"	1.25"



WATERLESS INLINE DRAIN TRAP SEAL

Superior drain odor control.



SureSeal press-fit installation



Patented memory hinge.
Complete seal every time.

Press-fit gasket installation.
No silicone needed.

Patented
pressure relief valve.
Prevents air lock.

Thicker substrate.
Longer seal life.

Side hinge operation.
Allows unobstructed flow in
heavy drainage situations.

Action videos and full details
[@rectorseal.com/sureseal](https://rectorseal.com/sureseal)

DWV SOLUTIONS

Continued

SureSeal®

Waterless inline floor drain trap seal. Simple press-fit installation

Code	Description	Qty
97041 (SS2009V)	2" Drain trap seal	6
97042 (SS3009V)	3" Drain trap seal	6
97043 (SS3509V)	3-1/2" Drain trap seal	6
97044 (SS4009V)	4" Drain trap seal	6
97081 contractor pk	2" Drain trap seal	24
97082 contractor pk	3" Drain trap seal	24
97084 contractor pk	4" Drain trap seal	24



FEATURES

- Stops drain odors and bugs
- Simple one-piece installation
- Patented air relief valve
- Economical
- Saves water - eliminates need for trap primer
- Models available to fit any manufacturer's ANSI/ASME conforming drain
- For use in any drain - in any location
- Ontario BMEC Authorization No. 22-02-398
- State of Massachusetts approved
- State of Wisconsin approved

SureSeal waterless inline drain trap seal solves odor and bug problems associated with infrequently used floor drains. Patented memory hinge and pressure relief valve deliver superior, longer lasting operation.

APPLICATION • SureSeal can be used with all 2", 3", and 4" floor drains and in 3 1/2" and 4" floor drain strainers to trap odors. i.e. shower drains, outdoor drains, basement drains, water heater drains, HVAC condensation drains, maintenance areas, floor/mop sinks, residential bathrooms, under kitchen sinks, apartment and condo bathrooms • SureSeal can be easily retrofitted to older drains, as its variety of designs ensure compatibility with all other drain types

U.S. Patent No. 9,010,363 B2; 9,416,986



Magic Vent®

Code	Description	Qty
97400	Micro	12
97405	Micro w/ PVC adapter	12
97406	Micro w/ ABS adapter	12



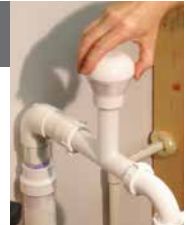
FEATURES

- Eliminates roof penetrations
- Great design flexibility
- Saves time and money
- Permitted for use in accordance with: Chapter 9 of the IPC, Chapter 31 of IRC, & Subpart G of the 24 CFR 3280 manufactured Home Construction and Safety Standards
- Tested and complies with NSF/ANSI 14

Air Admittance valves

APPLICATION • Performs the function of a DWV system vent stack, protecting the trap seal from siphonage without the need for additional piping to the outdoors

RECOMMENDED FOR • ABS • PVC



Magic Trap™

Code	Description	Qty
97402	Trap with threaded tee	12

FEATURES

- Automatically places AAV 4" above drain pipes
- Saves time and money
- Tee threads directly into AAV

Tubular polypropylene fitting

APPLICATION • 1-1/2" fitting replaces any standard 1-1/2" tubular trap • Magic Vent® Micro threads directly onto the tee connection of the Magic Trap™





PLUMBING SOLUTIONS

Calci-free™

Calci-flush™

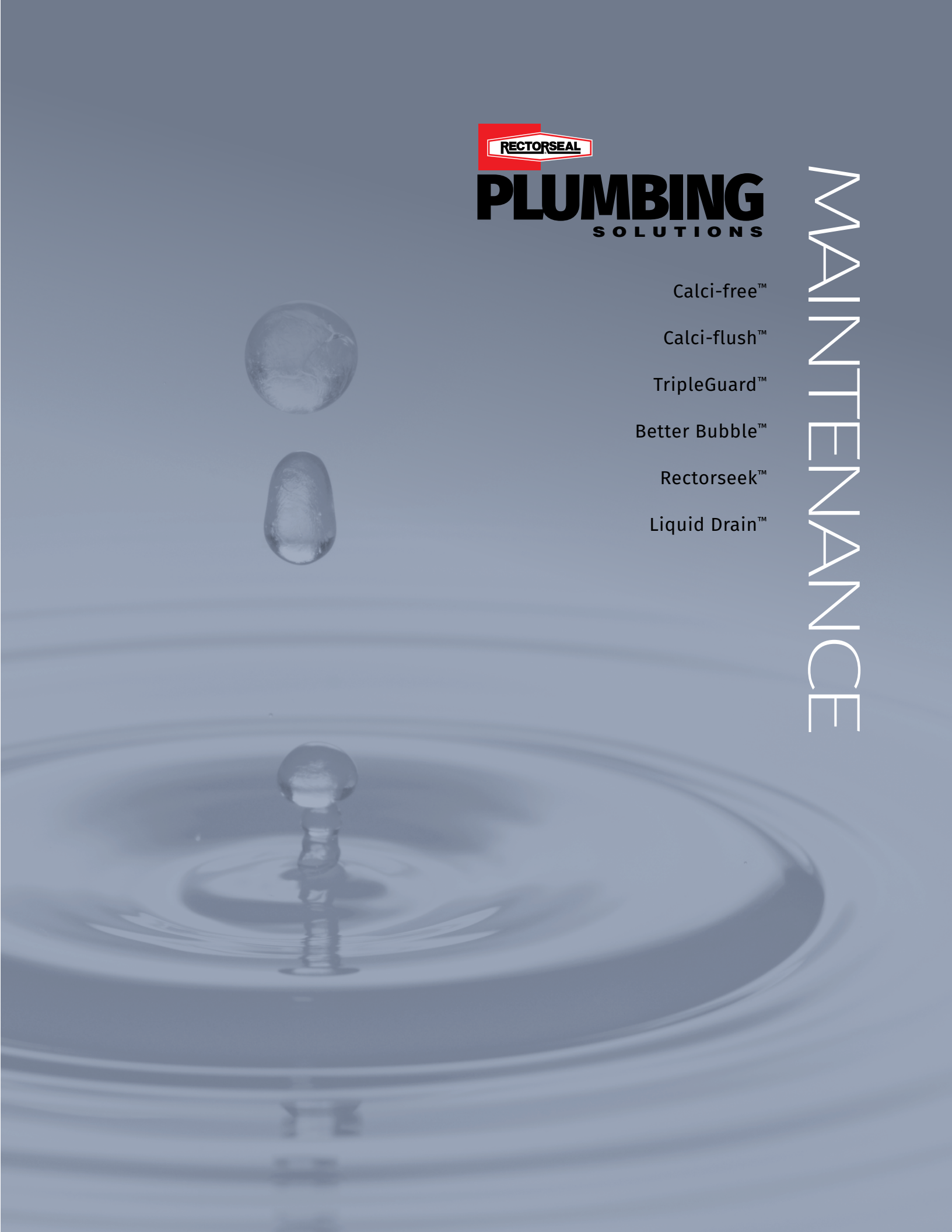
TripleGuard™

Better Bubble™

Rectorseek™

Liquid Drain™

MAINTENANCE



Calci-free™

TANKLESS WATER HEATER FLUSH

Flush heating coil deposits.



Restricted - Restored

Flushed Deposits

Tankless water heater coils can buildup deposits that restrict hot water pressure.

Calci-free removes coil deposits and fully restores hot water flow and efficiency.

RESTORE
CIRCULATION &
PRESSURE IN UNDER
20
MINUTES



TANKLESS WATER HEATER FLUSH

Calci-free™

Code	Description	Qty
68708	Flush 1.2 lbs.	12



FEATURES

- Restores circulation in 20 minutes
- More effective than vinegar
- Easy to use with no strong odor
- Cleans heat exchanger fast
- Biodegradable*

Tankless water heater flush

APPLICATION • Economical chemical cleaner to restore circulation and pressure in commercial and residential tankless water heaters • Unique combination of organic, inorganic and corrosion inhibiting components

RECOMMENDED FOR • Routine cleaning to remove calcium and other solid deposits from heating coils in tankless water heaters



Calci-free™ Kit

Code	Description	Qty
68711	Kit with 1.2 lbs. flush	1

FEATURES

- A complete cleaning system
- Cleans in only 20 minutes
- Heavy duty, chemical resistant utility pump
- Biodegradable*

Complete tankless water heater flush kit

APPLICATION

• Restores circulation and pressure in commercial and residential tankless water heaters • Cleans heater coils thoroughly

RECOMMENDED FOR • Routine cleaning to remove calcium and other solid deposits from heating coils in tankless water heaters



* Contains the best available biodegradable surfactants and detergents.

Calci-flush™

STANDARD TANK WATER HEATER FLUSH

Dissolve and flush tank deposits.



Standard gas and electric water heaters form deposits that inhibit heat transfer.

Standard gas and electric water heaters buildup tank deposits that inhibit the transfer of heat from the heating element to the water.

Calci-flush restores tank and hot water temperature efficiency.





STANDARD WATER HEATER FLUSH

Calci-flush™

Standard tank water heater flush

Code	Description	Qty
68707	1 gallon	4



FEATURES

- Removes tank sediment
- Restores water temperature
- More effective than vinegar
- Easy to use with no strong odor
- Biodegradable*

WARNING: This product can expose you to chemicals including Methyl Methanesulfonate, which is known to the State of California to cause cancer, and Methanol, which is known to the State of California to cause birth defects or other reproductive harm. For more information, go to www.P65Warnings.ca.gov.

APPLICATION • Highly effective chemical cleaner to dissolve and flush standard water heaters and heat exchangers • Unique combination of cleaning and corrosion inhibiting components

RECOMMENDED FOR • Routine cleaning to remove calcium and other solid deposits from tanked water heaters

Adapter allows secure connection and quick application.



* Contains the best available biodegradable surfactants and detergents.



LEAK SHUTOFF

TripleGuard **ACTIVE**

Code	Description	Qty
97720	Appliance Leak Shutoff	6

FEATURES

- Cold water shut off unit
- 10 ft cable
- Water leak detector
- Battery operated
- Easy installation
- Valve meets the requirements of NSF/ANSI 372

Automatic appliance leak shutoff

APPLICATION • Designed to protect homes from damages caused by a leaking water heater, washing machine or other appliance • When a leak is detected by the water leak detector, the automatic intake shutoff activates to close off the water source

- No SMART monitoring capability



WATER LEAK DETECTOR

AUTOMATIC APPLIANCE WATER INTAKE SHUTOFF

Battery operated



LEAK LOCATORS

Better Bubble™

Code	Description	Qty
65554	8 oz. - dauber top	12
65432	32 oz. - trigger spray	12
65273	1 gal.	4

FEATURES

- Fast acting
- Long lasting
- Easy to see bubbles
- Continuous bubbling

Gas leak locator

APPLICATION • Thick formula pinpoints the smallest natural gas, LPG and A/C refrigerant leaks with well defined elastic bubbles that stand up under pressure and windy conditions • Use on surface temperatures from 20°F to 250°F

RECOMMENDED FOR • All types of pipe, tubing, valves, tanks, pressure vessels, condenser / evaporator coils, refrigeration coils, and many other similar applications



RectorSeek™ Low-Temp

Code	Description	Qty
61273	1 gal.	4

FEATURES

- Longer bubbling action
- Spray application
- Easy to apply

Low temperature leak locator

APPLICATION • Leak locator for use on pipes or tanks containing gases at low temperatures • Effective from -35°F to 200°F

RECOMMENDED FOR • All types of pipe (except CPVC), tubing, valves, cylinders, tanks, pressure vessels, condenser / evaporator coils, refrigeration coils and many other similar applications



RectorSeek™ Mid-Temp

Code	Description	Qty
60273	1 gal.	4

FEATURES

- Longer bubbling action
- spray application
- Easy to apply

Mid temperature leak locator

APPLICATION • Leak locator for use at normal temperature on pipe or tanks that contain gases • Can be used on oxygen, air or gas at temperatures between 40°F to 200°F

RECOMMENDED FOR • All types of pipe, tubing, valves, cylinders, tanks, pressure vessels, condenser / evaporator coils, refrigeration coils and many other similar applications



Root Destroyer

Destroy root growth

Code	Description	Qty
81394	2 lbs.	12

FEATURES

- Fast acting at dissolving roots
- Will not harm tree or shrub
- Meets EPA Reg. No. 56756-1-51219

APPLICATION • Formulated to destroy and control the growth of roots which enter sewer systems through the pipe joints or cracks • Absorbed only by the roots



Liquid Drain™

Acid-free drain cleaner

Code	Description	Qty
80391	1 qt.	12



Nonfood Compounds
E1

FEATURES

- Non-acid
- Non-flammable
- High foaming
- Odor Free

APPLICATION • Lifts and pushes contaminants off to rapidly clear drain, sewer, or waste line
• Disintegrates paper, rags, sanitary products, grease, sludge, soap, fat, wood, hair, food and organic matter • Works in 15-30 minutes

RECOMMENDED FOR • Drains • Waste lines
• Traps • Tubs and toilet bowls • Shower stalls
• Sewers • Garbage disposals





PLUMBING SOLUTIONS

GoldenGrip™

Golden Extractor™

Golden Pipe Shredder™

Quick Saw™

Frugal Flush®

Pipe Repair Kit

Plumber's Grease

Silicone Sealants

Dark Cutting Oil

TOOLS/PRODUCTS



GOLDEN TOOLS

GoldenGrip™

Code	Description	Qty
97250	Single 1/2"	6
97252	Double 1" - 1-1/4"	3
97256	Set of 4 tools	1

FEATURES

- Self-locking & reversible
- No thread damage
- Works in tight spaces

Internal pipe wrench

APPLICATION • The right tool for quick and easy installation or extraction of pipe nipples • Self-locking, reversible internal wrench can be used with ratchets, extensions and impact wrenches

RECOMMENDED FOR

- Chrome pipe • Brass pipe • Cast Iron pipe • Galvanized pipe • Steel pipe • Can also be used to extract corroded pipe



Sold separately in two sizes or as a set of four with durable carry case

Golden Pipe Shredder™

Restore welded plastic pipe

Code	Description	Qty
98050	Set of 4 tools	1

FEATURES

- Self-locking & reversible
- Works in tight spaces

APPLICATION • Reams out solvent welded plastic fittings so they can be reused • Cuts stub outs to be flush or recessed with wall • Removes cracked water closet flanges



Sold as a set of four with durable carry case



Golden Extractor™

Tub drain tool

Code	Description	Qty
97258	Universal	3

FEATURES

- Quickly extracts tub drains
- Use to install new tub drains
- Built in bolt/screw remover
- Universal size
- Made of heat tempered steel

U.S. Patent No. 7,024,972

APPLICATION • For extracting tub drains • Utilizes a standard $\frac{3}{8}$ " drive ratchet to remove tub drains even when the cross arms are broken • Installs new drains • Removes bolts/screws where the heads are broken off or just won't move



PLUMBING PRODUCTS

Plumber's Grease

Code	Description	Qty
50811	2 oz.	12

FEATURES

- Meets MIL-G-25537C specifications

Lubricates faucets, stems and valves

APPLICATION • Lubricates in services up to 180°F



RectorSeal® Silicone Sealant

Code	Description	Qty
57505	10.3 oz. tube - white	12
57506	10.3 oz. tube - clear	12

FEATURES

- Remains flexible
- Vibration resistant
- Indoors/outdoor
- 100% silicone

General purpose

APPLICATION • Ideal for general sealing
• Dries to touch in 30 minutes and fully cures in 24 hours

RECOMMENDED FOR • Around electrical panels • Windows • Doors • Pipes/vents
• Corner joints • Aluminum siding • Other interior / exterior building materials



RectorSeal® Hi-Temp™

Code	Description	Qty
57500	10.1 oz. cartridge	24

FEATURES

- One component
- USDA specs for use in federally inspected meat and poultry plants
- MIL-A-46106A Amendment 2, Type 1

100% RTV silicone caulk

APPLICATION • Cures to a strong durable resilient rubber

RECOMMENDED FOR • Glass • Clean metal
• Most types of non-oily wood • Vulcanized silicone rubber • Silicone resins • Natural and synthetic fiber • Ceramic • Paper • Many painted and plastic surfaces



Water Heater Drain Pan

Code	Description	Qty
WHPA20	20" diameter, 1" adapter fitting	1
WHPA22	22" diameter, 1" adapter fitting	1
WHPA24	24" diameter, 1" adapter fitting	1
WHPA26	26" diameter, 1" adapter fitting	1
WHPA30	30" diameter, 1" adapter fitting	1

FEATURES

- 23 gauge aluminum
- 1" PVC fitting with rubber gasket
- For either gas or electric water heaters
- Pre-drilled, includes drain adapter
- Meets International Plumbing Code

For gas or electric water heaters

APPLICATION • An easy and inexpensive way to prevent water damage. Located under the water heater, it catches water from leaks, spillage, or drips, and prevents costly floor water damage.

RECOMMENDED FOR • Gas and electric tanked water heaters



PLUMBING PRODUCTS

Quick Saw

Code	Description	Qty
97575	Cable Saw	12
FEATURES <ul style="list-style-type: none"> • Economical, durable • Contoured, detachable handles • 24" cable 		

Cable saw

APPLICATION • Ideal for cutting buried PVC pipe • Pipe located between joists • Cutting PVC pipe flush with walls or floors



Frugal Flush®

Code	Description	Qty
97760	Retroflapper	12
97771	Universal 1.6 Blistercard	12
FEATURES <ul style="list-style-type: none"> • Early closing flapper • Superior performance • Adjustable dial 		

Adjustable flapper valve

APPLICATION • Water conservation device
• Adjustable dial allows for water savings

RECOMMENDED FOR • Retroflapper™ reduces water consumption in 3.5, 5 and 7 gal. tanks • Universal 1.6 replacement flapper is for 1.6 gal. tanks



Pipe Repair Kit

Code	Description	Qty
82112	Pipe repair kit	12
FEATURES <ul style="list-style-type: none"> • Easy to use • Fast setting, durable repair • Reduces repair cost • Withstands pressure up to 450 PSI 		

Quick-fix pipe repair system

APPLICATION • Stops leaks on all rigid pipes • Consists of a 2" x 4' knitted fiberglass cloth coated with a water-activated polyurethane resin that adheres to all metal, plastic, fiberglass and concrete piping

RECOMMENDED FOR • Plumbing • Pool • Spa • Irrigation • HVAC applications



Dark Cutting Oil

Code	Description	Qty
94392	1 qt.	12
94273	1 gal.	4
FEATURES <ul style="list-style-type: none"> • Increased lubricity/ longer die life • Penetrates quickly • Keeps dies cool 		

Low rpm machine thread cutting oil

APPLICATION • Designed to reduce friction • Effective coolant and anti-weld agent • An extreme pressure lubricant during thread cutting operations • Will not congeal above 20° F





Metacaulk®

Cast-In-Place Device

Intumescent Sealants

Elastomeric Sealants

Pipe Collars/Sleeves

Putty Sticks/Pads

Joint / Wrap Strip

Smoke Sealants

FIRESTOPPING

CID

CAST-IN-PLACE DEVICE

Intumescent service supply.



Metacaulk CID provides through floor firestop protection for all types of building service penetrations.



Action videos and full details
[@rectorseal.com/cid](https://rectorseal.com/cid)

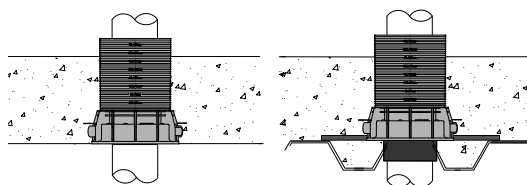
Cast-In-Place Device

Firestop for through floor penetration.

Code	Cast-in-Place Device	Qty
67202	2-inch device (8-in. height)	12
67203	3-inch device (8-in. height)	12
67204	4-inch device (8-in. height)	12
67206	6-inch device (8-in. height)	6
Code	Height Extension	Qty
67232	4-in. extension for 2-in. device	6
67233	4-in. extension for 3-in. device	6
67234	4-in. extension for 4-in. device	6
67236	4-in. extension for 6-in. device	6
Code	Deck Adapter Kit	Qty
67222	2-in. adapter w/4 in. ext.	6
67223	3-in. adapter w/4 in. ext.	6
67224	4-in. adapter w/4 in. ext.	6
67226	6-in. adapter w/4 in. ext.	6

APPLICATION • Single component Cast-In-Place device, approved for use with a multitude of penetrating items. Will prevent the spread of fire from through-penetration services in concrete floors • Installs prior to concrete pour • Casts directly into the concrete to form an embedded intumescent service supply • Complies to UL required Accelerated Aging and High Humidity Testing

RECOMMENDED FOR • Combustible plastic/metal pipe, power & telephone cable floor penetrations in multi-floor construction • Installs using either temporary wood or metal forms



CID Alignment connectors allow tight placement of multiple penetrations.

30YR
WARRANTY



FEATURES

- Integral intumescent firestop
- UL CLASSIFIED systems up to 4 hrs
- Eliminates drilling of concrete
- Reduces labor time
- Tested in accordance with ASTM E814 (UL 1479), CAN/ULC-S115
- VOC compliant - CDPH Standard Method v1.2
- Assembled in USA

Optional snap-on CID Extension adds 4-inch height ▶

CID height is 8-inches ▶

Alignment connectors for multiple services ▶

Corrugated metal floor deck adapters ▶



Caps snap-on for concrete pour, snap-off for services

◀ Accepts combustible plastic/metal pipe, power & telephone cable

Height Increments

◀ Identifier Sticker for contractor/application



FBC™ System Compatible indicates that this product has been tested, and is monitored on an ongoing basis, to assure its chemical compatibility with FlowGuard Gold®, BlazeMaster® and Corzan® piping systems and products made with TempRite® Technology. The FBC System Compatible Logo, FBC™, FlowGuard Gold®, BlazeMaster®, Corzan® and TempRite® are trademarks of Lubrizol Advanced Materials, Inc. or its affiliates.

Contact: RectorSeal®

P 713-263-8001 | 800-231-3345

F 713-263-7577 | 800-441-0051

W rectorseal.com

Cast-in-Place Tub Box

Firestop CID accessory for tub drains

Code	Description	Qty
67212	Tub Box with 2" Metacaulk CID	1
67213	Tub Box with 3" Metacaulk CID	1



FEATURES

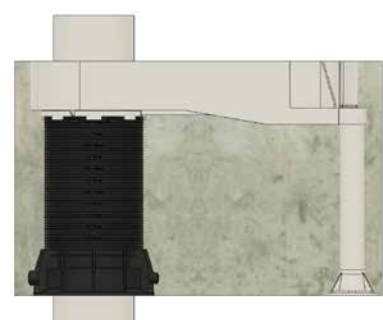
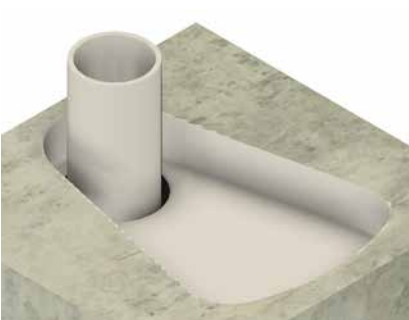
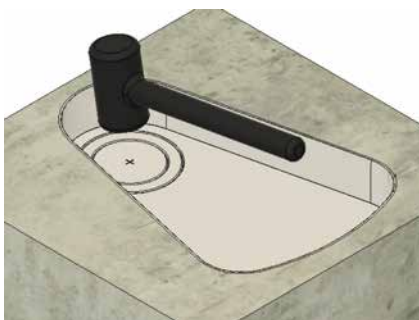
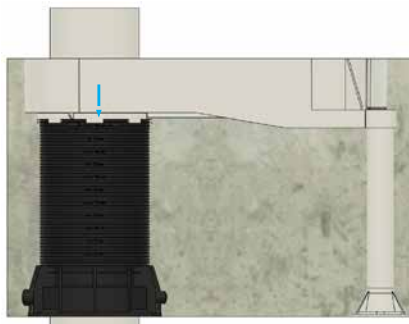
- Integral intumescent firestop
- UL CLASSIFIED systems up to 3 hrs
- Eliminates drilling of concrete
- Available in two sizes to accommodate up to 2" & 3" pipes
- Maximum slab height with included components is 10"
- Tested in accordance with ASTM E814 (UL 1479); CAN/ULC-S115
- For slabs 10" or greater, Metacaulk CID extensions are available. Use 3/4" PVC coupling and pipe to extend the tub box legs as needed.

APPLICATION

- Designed to prevent the spread of fire from bathtub or jetted-tub drains to upper level
- Installed prior to concrete pour

RECOMMENDED FOR

- Providing through penetration firestop protection for both plastic and metal drain pipes





METACALK FIRESTOP SEALANTS

Metacaulk® 1000

Intumescent, water-based firestop sealant

Code	Description	Qty
66640	10.3 oz. cartridge	12
66303	30 oz. cartridge	12
66312	20.2 oz. sausage pack	12
66309	5 gal.	1

APPLICATION • Will prevent the spread of fire through joint openings and through-penetrations
 • No dilution or mixing required • Can be used in areas under constant vibration and movement • Use in fire-rated gypsum wallboard partitions, concrete walls or floors, wood floors and concrete or corrugated steel deck floor/ceiling assemblies

RECOMMENDED FOR • Metal pipes • Insulated pipes
 • Fiberglass & plastic pipes • Wall construction joints
 • Power & telephone cables



FEATURES

- UL CLASSIFIED systems up to 4 hrs
- Highly intumescent
- Excellent freeze-thaw
- For interior use - paintable
- VOC compliant - CDPH Standard Method v1.2
- 3 year shelf life
- STC rating 62
- Tested in accordance with ASTM E814 (UL 1479), ASTM E1966 (UL 2079), ASTM E1399, CAN/ULC-S115, ASTM C834, ASTM G21, ASTM E84
- Complies to UL required Accelerated Aging and High Humidity Testing
- Color: Red



Refer to the Firestop Accessories section for a selection of caulking guns.



*FBC™ System Compatible indicates that this product has been tested, and is monitored on an ongoing basis, to assure its chemical compatibility with FlowGuard Gold®, BlazeMaster® and Corzan® piping systems and products made with TempRite® Technology.
 The FBC System Compatible Logo, FBC®, FlowGuard Gold®, BlazeMaster®, Corzan® and TempRite® are trademarks of Lubrizol Advanced Materials, Inc. or its affiliates.



METACULK FIRESTOP SEALANTS

Metacaulk® 350i

Intumescent firestop sealant

Code	Description	Qty
66616	10.3 oz. cartridge	12
66611	20.2 oz. foil pack	12
66613	5 gal.	1



FEATURES

- Excellent freeze-thaw
- For interior use - paintable
- STC rating 53
- Tested in accordance with ASTM E814 (UL 1479), ASTM E1966 (UL 2079) & ASTM E1399
- VOC compliant - CDPH Standard Method v1.2
- 3 year shelf life
- Complies to UL required Accelerated Aging and High Humidity Testing
- Color: Red

APPLICATION • One component, general purpose sealant and smoke seal

- Intumescent, water-based, non-sag caulking grade sealant that is easy to apply and great for retrofits
- Suitable for dynamic movement

RECOMMENDED FOR

- Metal pipes • Insulated pipes • Fiberglass & plastic pipes • Wall construction joints • Power & telephone cables



Metacaulk® MC 150+

General purpose firestop sealant

Code	Description - (Red)	Qty
66648	10.3 oz. cartridge	12
66383	30 oz. cartridge	12
66385	20.2 oz. foil pack	12
66389	5 gal.	1
Code	Description - (Gray)	Qty
66424	20.2 oz. foil pack- Gray	12
66425	5 gal. Gray	1



FEATURES

- Flexible
- Non-sag
- UL CLASSIFIED up to 4 hrs
- 3 year shelf life
- Tested in accordance with ASTM E814 (UL 1479), ASTM E1966 (UL 2079), ASTM E1399, CAN/ULC-S115, ASTM C834, ASTM G21, ASTM E84
- VOC compliant - CDPH Standard Method v1.2
- STC rating 65
- Color: Red/Gray

APPLICATION • One component, general purpose fire-rated sealant and smoke seal for construction joints and through-penetrations on both horizontal and vertical surfaces

- Non-sag caulking grade sealant that is easy to apply as well as to retrofit
- Can be used in areas exposed to vibration or movement

RECOMMENDED FOR

- Metal pipes • Insulated pipes • Fiberglass and plastic pipes • Wall construction joints • Power and telephone cables • HVAC, bus ducts • Misc. electrical applications



*FBC™ System Compatible indicates that this product has been tested, and is monitored on an ongoing basis, to assure its chemical compatibility with FlowGuard Gold®, BlazeMaster® and Corzan® piping systems and products made with TempRite® Technology.

The FBC System Compatible Logo, FBC™, FlowGuard Gold®, BlazeMaster®, Corzan® and TempRite® are trademarks of Lubrizol Advanced Materials, Inc. or its affiliates.

Metacaulk® 835+

Elastomeric, silicone firestop sealant

Code	Description	Qty
66645	10.15 oz. cartridge	12
66019	5 gal. caulk grade	1
66300	20.2 oz caulk grade	12
66301	20.2 oz self-leveling	12
66295	5 gal. spray	1



Intertek
CONTROL NO.
5009113
SPRAY ONLY

FEATURES

- Exterior / Interior use
- Weather/chemical resistant
- Excellent moisture resistance
- Caulk & SL tested in accordance with ASTM E814 (UL 1479), ASTM E1966 (UL 2079) & ASTM E1399
- STC rating 55
- Caulk - Meets ASTM C920, Type S, Grade NS, Class 25, Use NT, M, G, A, O
- SL Self Leveling: Meets ASTM C920, Type S, Grade SL, Class 25, Use NT, M, A
- Spray - Tested in accordance with ASTM E1966 (UL 2079), ASTM E2307 and ASTM E1399
- VOC Compliant - CDPH Standard Method v1.2
- 2 year shelf life, 18 mths Spray
- Color: Gray

APPLICATION • Used in systems where dynamic movement is expected • Resistant to chemical exposure

RECOMMENDED FOR • Cable and cable trays • EMT • Insulated and uninsulated steel pipe • Construction and control joints • Interior expansion joints



Spray



*FBC™ System Compatible indicates that this product has been tested, and is monitored on an ongoing basis, to assure its chemical compatibility with FlowGuard Gold®, BlazeMaster® and Corzan® piping systems and products made with TempRite® Technology.

The FBC System Compatible Logo, FBC™, FlowGuard Gold®, BlazeMaster®, Corzan® and TempRite® are trademarks of Lubrizol Advanced Materials, Inc. or its affiliates.



FIRESTOP DEVICES

Metacaulk® Firestop Collars

Prefabricated system

Code	Description	Qty
66352	1-½" Pipe Collar	12
66353	2" Pipe Collar	12
66350	3" Pipe Collar	6
66351	4" Pipe Collar	6
66354	6" Pipe Collar	2

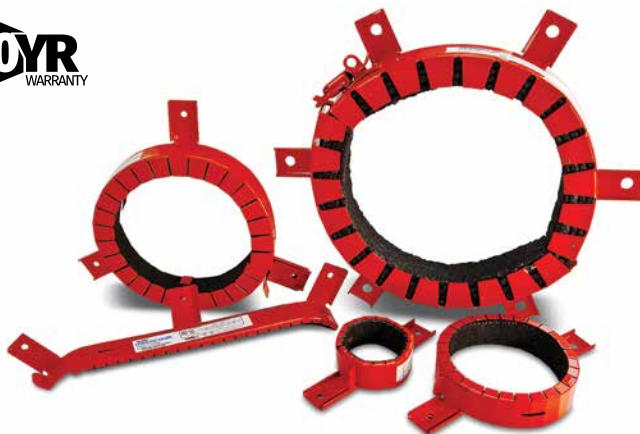


FEATURES

- No measurements of material
- Fits in limited access areas
- 25% reduction of installation times
- Tested in accordance with ASTM E814 (UL 1479), ASTM G21, ASTM E84 and CAN/ULC-S115
- VOC compliant - CDPH Standard Method v1.2
- Complies to UL required Accelerated Aging and High Humidity Testing

APPLICATION • UL CLASSIFIED for both open and closed systems • Simple locking mechanism for easy installation

RECOMMENDED FOR • PVC • CPVC • ABS • PVC foam core • ABS foam core • FRPP • PEX pipe & tubing • PVDF • PP (Aquatherm) • Insulated pipes (FG & AB/PVC) • Electrical cable



Metacaulk® Intumescent Sleeve

Firestop device

Code	Description	Qty
66584	For 2", 3" & 4" Pipe	6
66582	For 6" & 8" Pipe	1

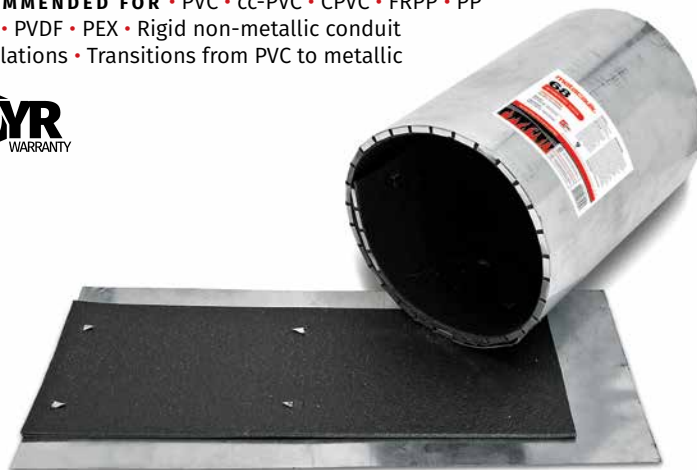


FEATURES

- No steel bolts or fasteners
- Can be retrofitted
- Flexible
- Tested in accordance with ASTM E814 (UL 1479) & CAN/ULC-S115
- VOC compliant - CDPH Standard Method v1.2
- Complies to UL required Accelerated Aging and High Humidity Testing

APPLICATION • Firestop through penetrations with a single sleeve • Ideal for combustible pipes penetrating a concrete fluted deck assembly • Eliminates the need to firestop on both sides of a penetration

RECOMMENDED FOR • PVC • cc-PVC • CPVC • FRPP • PP • ABS • PVDF • PEX • Rigid non-metallic conduit installations • Transitions from PVC to metallic



*FBC™ System Compatible indicates that this product has been tested, and is monitored on an ongoing basis, to assure its chemical compatibility with FlowGuard Gold®, BlazeMaster® and Corzan® piping systems and products made with TempRite® Technology. The FBC System Compatible Logo, FBC™, FlowGuard Gold®, BlazeMaster®, Corzan® and TempRite® are trademarks of Lubrizol Advanced Materials, Inc. or its affiliates.



ELECTRICAL OUTLET FIRESTOP

Cover Guard™

Fire-rated gasket for electrical boxes

Code	Description	Qty
66270	Double receptacle	50
66272	Single receptacle	50
66274	Double switch	50
66276	Single switch	50
66265	Single decor	50
66266	Double decor	50



FEATURES

- Good sound insulator
- Easy to install
- Highly intumescent
- STC rating 54
- Complies to UL required Accelerated Aging and High Humidity Testing
- VOC Compliant - CDPH Standard Method v1.2
- Tested in accordance with UL 263/ASTM E119 and ASTM E814 (UL 1479)

APPLICATION • A single component fire-rated gasket for use with metallic electrical boxes to comply with the "24 inch rule" • Fits under the cover plate and does not take up volume



Box Guard™

Fire-rated pad for electrical boxes

Code	Description	Qty
66366	Single box	50
66367	Double box	50
66369	4-11/16" x 4-11/16"	50



CONTROL NO.
5007154

FEATURES

- Adheres to back of electrical box
- Non-conductive
- Highly intumescent
- STC rating 53
- Tested in accordance with UL 263/ASTM E119, ASTM G21 and ASTM E814 (UL 1479), ASTM E84
- Complies to UL required Accelerated Aging and High Humidity Testing
- VOC Compliant - CDPH Standard Method v1.2

APPLICATION • One component fire-rated for use in electrical boxes • It is inserted on the inside back wall of an electrical box prior to wiring • Approved for metal outlet boxes with metal, decora style, or plastic cover plates





PUTTY & PUTTY STICKS

FRP

Fire-rated putty pads & sticks

Code	Description	Qty
66345	18 in ³ stick	12
66340	6" x 7" x 1/8" thick	20
66335	7" x 7" x 1/8" thick	20
66475	9" x 9" x 1/8" thick	20



FEATURES

- Applied by hand
- No asbestos fillers
- Pads - STC rating 60
- For interior use
- Adheres to all common building surfaces
- Tested in accordance with ASTM E814 (UL 1479), UL 263 / ASTM E119, ASTM G21
- VOC compliant - CDPH Standard Method v1.2

APPLICATION • Putty sticks are used to seal around penetrating items through fire-rated walls, floors and within blank openings • Putty pads are used to maintain the hourly rating of fire-rated walls containing electrical metal and non-metallic outlet boxes and to reduce sound transmission • Hand moldable with no curing time





FIRESTOP FOR LARGE OPENINGS

Composite Sheet

For large openings with or without penetrating items

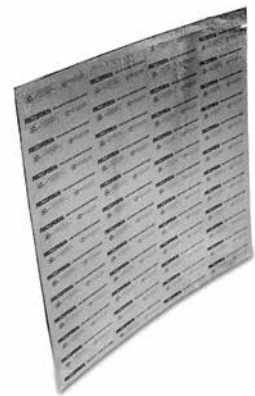
Code	Description	Qty
66320	36" x 36"	1



FEATURES

- Light weight
- Thinner sheets
- Re-enterable
- VOC compliant - CDPH Standard Method v1.2
- Tested in accordance with ASTM E814 (UL 1479)
- Complies to UL required Accelerated Aging and High Humidity Testing

APPLICATION • Rigid fire resistive panel used to seal penetrations and restore the fire rating to floor/ceilings or walls • Made of reinforced, highly intumescent material bonded on one side to a stainless steel sheet • Ideal for clean room applications • Install using standard sheet metal tools



FRM

Fire rated mortar - For large openings

Code	Description	Qty
66334	45 lbs. bag	1



FEATURES

- Non-sag adjustable consistency
- High yield per lb.
- No special tools needed
- Tested in accordance with ASTM E814 (UL 1479)
- 2 year shelf life
- Color: Red

APPLICATION • Rapid hardening gypsum/cement compound for large openings • Sets without shrinking and can form a rigid, gas tight, fire resistant seal • Can be cut or drilled and resealed

RECOMMENDED FOR

- Power cables • Fiber optic • Telephone cables • Aluminium or steel cable trays
- EMT • Copper • Steel • Cast iron pipe



Firestop Pillows

For large temporary openings

Code	Description	Qty
66362	2" x 9" x 6"	10
66363	3" x 9" x 6"	10



FEATURES

- Forms a very strong char
- No wire mesh required
- Easy to install - no tools
- Tested in accordance with ASTM E814 (UL 1479) and CAN/ULC-S115
- VOC compliant - CDPH Standard Method v1.2
- Complies to UL required Accelerated Aging and High Humidity Testing

APPLICATION

• Intumescent • Designed for use primarily in large temporary or frequently accessed openings with cables, cable trays, blank openings or multiple penetrations



*FBC™ System Compatible indicates that this product has been tested, and is monitored on an ongoing basis, to assure its chemical compatibility with FlowGuard Gold®, BlazeMaster® and Corzan® piping systems and products made with TempRite® Technology.
The FBC System Compatible Logo, FBC™, FlowGuard Gold®, BlazeMaster®, Corzan® and TempRite® are trademarks of Lubrizol Advanced Materials, Inc. or its affiliates.



JOINT STRIP

Blaze Foam™

Code	Description	Qty
66024	48" x 5/8" x 1.5"	80 pcs.
66021	48" x 5/8" x 1"	80 pcs.



FEATURES

- Easy one step installation
- For 1 & 2 hr rated gypsum walls
- No mechanical fastening required
- Tested in accordance with ASTM E1966 (UL 2079)
- Highly intumescent
- STC rating 64
- L Rating < 1 CFM/LF

Intumescent compressible firestop foam



APPLICATION • Intumescent compressible foam used to firestop head of wall, wall to wall and bottom of wall joint applications both dynamic and static

- Designed for installation within fire resistive joints with up to 2 hours F rating

RECOMMENDED FOR

- Head of Gypsum Wall, Wall to Wall and Bottom of Wall joint applications both dynamic and static



Joint Strip

Code	Description	Qty
66700	1/16" x 1" x 82' strip	6
66701	1/16" x 1-1/2" x 82' strip	4
66704	1/16" x 2" x 82' strip	3
66702	1/16" x 2-1/2" x 82' strip	2
66703	1/16" x 3" x 82' strip	2
66705	1/16" x 4" x 82' strip w/ adhesive	2



FEATURES

- No firestop caulk required
- Single sided application
- Simple & easy to use
- Tested in accordance with ASTM E814 (UL 1479), ASTM E1966 (UL 2079), ASTM E84
- VOC compliant - CDPH Standard Method v1.2
- Complies to UL required Accelerated Aging and High Humidity Testing

Flexible material for up to 2" wide joints

APPLICATION • Flexible strip firestop material used in concrete and masonry floor and wall joints up to 2" wide, duct insulation and up to 4" PVC/CPVC & Membrane penetrations • Prevents the passage of fire between joints

RECOMMENDED FOR

- Stadium construction, tilt up panels • Curtain wall panels
- All concrete and masonry wall and floor construction joint applications
- Large electrical membrane penetrations and Med Gas units





WRAP STRIP

Wrap Strip

Flexible intumescent strip for plastic and insulated pipe

Code	Description	Qty
66440	1" x 18'	2
66441	1" x 36'	4
66442	2" x 18'	1
66443	2" x 36'	2



FEATURES

- No cure time • Easy to apply
- VOC compliant - CDPH Standard Method v1.2
- Long length means less waste
- Systems up to 14" PVC
- Highly intumescent
- Tested in accordance with ASTM E814 (UL 1479), ASTM G21, ASTM E84 and CAN/ULC-S115
- Complies to UL required Accelerated Aging and High Humidity Testing

APPLICATION • Simply wrap required number of strips around penetrating item to completely fill the annular space or as required by system design • When exposed to heat, expands to form a hard char to seal off the penetration

RECOMMENDED FOR

- Plastic and insulated pipe applications



SMOKE SEALANTS

SAS Sealant

Smoke & Acoustic, high-grade acrylic latex

Code	Description	Qty
66652	20.2 oz. foil pack	12
66650	5 gal.	1



FEATURES

- Meets LEED requirements
- Excellent for large openings
- Impedes sound transfer
- Water clean up
- Easy to dispense
- Use both vertically or horizontally
- Interior application
- VOC compliant - CDPH Standard Method v1.2
- Tested in accordance with ASTM G21, ASTM C834 and ASTM E84
- STC rating 69
- 3 year shelf life
- Color: White

APPLICATION • Provides a permanent seal for penetrations, membrane openings and static or dynamic joints in smoke or sound rated assemblies

- In the event of a fire it will prevent the movement of smoke and impede the transfer of sound in non-fire rated assemblies

RECOMMENDED FOR

- Metallic and nonmetallic pipes • Outlet and receptacle boxes
- Membrane penetrations
- Head of wall • Bottom of wall • Wall to wall joints



*FBC™ System Compatible indicates that this product has been tested, and is monitored on an ongoing basis, to assure its chemical compatibility with FlowGuard Gold®, BlazeMaster® and Corzan® piping systems and products made with TempRite® Technology.

The FBC System Compatible Logo, FBC™, FlowGuard Gold®, BlazeMaster®, Corzan® and TempRite® are trademarks of Lubrizol Advanced Materials, Inc. or its affiliates.



SMOKE SEALANTS & FIRESTOP ACCESSORIES

Metacaulk® RS 136

Fireblock / Smoke seal caulk

Code	Description	Qty
66408	10.3 oz. cartridge	12



FEATURES

- Smoke & acoustic caulk
- Non-combustible
- Interior application
- Tested in accordance with ASTM E136
- 2 year shelf life
- Color: Red

APPLICATION • General purpose fireblock, draft stop • Beds and seals small voids, splices and gaps • Water soluble • Not for use in vibration or wet environments

RECOMMENDED FOR • Any application where a non-combustible sealant is required that meets ASTM E136 specification in non-rated construction



FIRESTOP ACCESSORIES

Caulking Guns

Cartridge & sausage

Code	Description	Qty
66114	10.3 oz. gun	1
66115	30 oz. gun	1
66116	20.2 oz. foil pack gun	1
66117	Replacement tips	25

FEATURES

- Industrial grade



Universal Collar

For concrete, wood & gypsum

Code	Description	Qty
66091	2" x 50' roll	1
66095	1" x 50' roll	1

FEATURES

- Galvanized steel



6 lb./ cu. ft. Safing

Mineral wool backing

Code	Description	Qty
79001	2" thick	10

FEATURES

- Non-combustible



Foam Backer Rod

Fills gaps prior to sealing

Code	Description	Qty
66112	1" x 75'	1

FEATURES

- Easy-to-use





RECTORSEAL

PLUMBING

SOLUTIONS solvent cement

rectorseal.com

Leading the industry in quality, warranty and support.





A CSW Industrials Company

SOLVENT CEMENTS

Single source for distributors,

plumbers, electricians and irrigation specialists.



SOLVENT CEMENTS • PRIMERS • CLEANERS

RectorSeal provides an extensive range of solvent cements, offering the broadest range of sizes and formulas for welding PVC, CPVC, and ABS pipe installation.

Solvent Cement Body. Solvent cements are available in three body thicknesses - Regular, Medium, Heavy. To some degree the body of the solvent is chosen by the preference of the contractor. However, body thicknesses can affect setting times. For smaller 2"-3" piping use regular body. Heavy body cements provide a slower set that allows the contractor more time to get adequate cement around the pipe to avoid flash off.

Solvent Cement color. Colors range from clear for welding PVC to gray for electrical conduit and black for ABS application. Gold and orange color designate CPVC pipe. Blue quickly indicates irrigation type use.

Primers. RectorSeal primers properly etch the pipe surfaces to ensure a strong and consistent weld every time. Primers are offered in both purple as well as clear, satisfying applicable plumbing code.

Complete application usage chart can be found on pages 12-13.



Solvent cements, primers and cleaners are available in multiple sizes.

RectorSeal solvent cements and primers have been delivering strong, consistent pipe installation for over 50 years.

Action videos and full details @ rectorseal.com/solventcements





RECTORSEAL LOW-VOC SOLVENT CEMENTS

Apply all solvent cements in conjunction with RectorSeal primer

Pete™ 602L

Code	Description	Qty
55922	¼ pt.	24
55924	½ pt.	24
55926	1 pt.	12
55928	1 qt.	12
55916	1 gal. wide mouth	4



pw-dwv-sw

FEATURES

- LEED compliant
- NSF approved for potable water
- 3 year shelf life
- Meets ASTM D2564
- Low-VOC

WARNING: This product can expose you to Tetrahydrofuran, which is known to the State of California to cause cancer. For more information go to: www.P65Warnings.ca.gov.

○ Clear - medium body PVC solvent cement



APPLICATION • Polyvinyl chloride (PVC) solvent cement used for joining PVC pipe and socket-type fittings which meet Class 12454 as defined in ASTM specification D1784 • For up to 6" for schedule 40; 1 ¼" for schedule 80

RECOMMENDED FOR • Potable water • Pressure pipe • Conduit • Sewers • DWV systems • Industrial



Gene™ 404L

Code	Description	Qty
55901	¼ pt.	24
55902	½ pt.	24
55904	1 pt.	12
55906	1 qt.	12
55908	1 gal.	4



pw-dwv-sw

FEATURES

- Fast setting formula
- LEED compliant
- NSF approved for potable water
- 3 year shelf life
- Meets ASTM D2564
- Low-VOC

WARNING: This product can expose you to Tetrahydrofuran, which is known to the State of California to cause cancer. For more information go to: www.P65Warnings.ca.gov.

○ Clear - regular body PVC solvent cement



APPLICATION • Polyvinyl chloride (PVC) solvent cement used for joining PVC pipe and socket-type fittings which meet Class 12454 as defined in ASTM specification D1784 • Schedule 40 up to 2" pressure; up to 4" non-pressure pipe (DWV) • ABS to PVC non-pressured transition joints

RECOMMENDED FOR • Potable water • Pressure pipe • Conduit • Sewers • DWV systems



Gold™ 844L

Code	Description	Qty
55951	½ pt.	24
55952	1 pt.	12
55954	1 qt.	12
55955	1 gal. wide mouth	4



pw-dwv-sw

FEATURES

- Excellent gap filling
- LEED compliant
- NSF approved for potable water
- 3 year shelf life
- Meets ASTM D2564
- Low-VOC

WARNING: This product can expose you to Tetrahydrofuran, which is known to the State of California to cause cancer. For more information go to: www.P65Warnings.ca.gov.

○ Clear - heavy body PVC solvent cement

APPLICATION • Polyvinyl chloride (PVC) solvent cement used for joining PVC pipe and socket-type fittings which meet Class 12454 as defined in ASTM specification D1784 • For pipe up to 12" Schedule 40 and Schedule 80


RECOMMENDED FOR • Potable water • Pressure pipe • Conduit • Sewers • DWV systems • Industrial



RECTORSEAL LOW-VOC SOLVENT CEMENTS
Continued

Homer™ 828L

Code	Description	Qty
55961	1 pt.	12
55963	1 qt.	12
55964	1 gal. wide mouth	4



FEATURES

- Superior bonding strength
- LEED compliant
- NSF approved for potable water
- 3 year shelf life
- Meets ASTM D2564, CSA B137.3, CSA B181.2
- Low-VOC

WARNING: This product can expose you to Tetrahydrofuran, which is known to the State of California to cause cancer. For more information go to: www.P65Warnings.ca.gov.

Gray - heavy body PVC solvent cement

APPLICATION • Polyvinyl chloride (PVC) solvent cement used for joining PVC pipe and socket-type fittings which meet Class 12454 as defined in ASTM specification D1784 • For pipe up to 12" Schedule 40 and Schedule 80 • Remains stable from 40° F to 110° F


RECOMMENDED FOR

- Potable water • Pressure pipe
- Conduit • Sewers • DWV systems
- Industrial



Arctic™ 616L

Code	Description	Qty
55919	1 pt.	12
55948	1 qt.	12
55953	1 gal. wide mouth	4



FEATURES

- Formulated for use in cold weather
- LEED compliant
- NSF approved for potable water
- 3 year shelf life
- Meets ASTM D2564
- Low-VOC
- State of Wisconsin Approved

WARNING: This product can expose you to Tetrahydrofuran, which is known to the State of California to cause cancer. For more information go to: www.P65Warnings.ca.gov.

Clear - medium body PVC solvent cement

APPLICATION • Premium polyvinyl chloride (PVC) solvent cement used for joining PVC pipe and socket-type fittings which meet Class 12454 as defined in ASTM specification D1784 • Pipe up to 6" Schedule 40; Up to 1 1/4" Schedule 80 • Remains stable from 0° F to 120° F


RECOMMENDED FOR

- Potable water • Pressure pipe
- Conduit • Sewers
- DWV systems



Charlie™ 412L

Code	Description	Qty
55956	1/4 pt.	24
55957	1/2 pt.	24



FEATURES

- For CPVC pipe
- LEED compliant
- 2 year shelf life
- Meets ASTM F493 specs
- Low-VOC
- NSF approved for potable water

Orange - regular body CPVC solvent cement

APPLICATION • Chlorinated polyvinyl chloride (CPVC) solvent cement for joining CPVC pipe, tubing and socket-type fittings which meet Class 23467 as defined in ASTM specification D1784 • For use on CPVC pipe up to 2" Schedule 40


RECOMMENDED FOR

- Potable water • Pressure pipe
- DWV systems



John™ 647L

Code	Description	Qty
55938	1/4 pt.	24
55940	1/2 pt.	24
55942	1 pt.	12
55944	1 qt.	12



FEATURES

- UPC (IAPMO) listed
- Meets ASTM D2235 specifications
- LEED compliant
- 2 year shelf life
- Low-VOC

Black - ABS medium body solvent cement

APPLICATION • For joining ABS plastic pipe and socket-type fittings up to 6" schedule 40 and Schedule 80 • Max VOC per SCAQMD 1168/316A or BAAQMD Method 40: 325 g/l.


RECOMMENDED FOR

- Sewer pipe
- DWV systems



Heavy Duty 811L

Code	Description	Qty
55967	1 pt.	12
55968	1 qt.	12



FEATURES

- For CPVC pipe
- LEED compliant
- 2 year shelf life
- Meets ASTM F493 specs
- Low-VOC
- NSF approved for potable water

Orange - heavy body CPVC solvent cement

APPLICATION • Chlorinated polyvinyl chloride (CPVC) solvent cement for joining CPVC pipe, tubing and socket-type fittings which meet Class 23467 as defined in ASTM specification D1784 • For use on CPVC pipe up to 12" Schedule 40 and Schedule 80

RECOMMENDED FOR

- Potable water • Pressure pipe
- DWV systems



WARNING: This product can expose you to Tetrahydrofuran, which is known to the State of California to cause cancer. For more information go to: www.P65Warnings.ca.gov.

Mike™ 425L

Code	Description	Qty
55969	1/4 pt.	24
55970	1/2 pt.	24
55973	1 pt.	12
55974	1 qt.	12

FEATURES

- Multi purpose
- LEED compliant
- 2 year shelf life
- Low-VOC

Amber - medium body multi purpose solvent cement

APPLICATION • For use on PVC, CPVC and plastic pipe and socket-type fittings • Can be used on transitions joints to join PVC to CPVC and PVC • Pipe up to 6" Schedule 40

RECOMMENDED FOR

- Pressure pipe
- DWV systems





WARNING: This product can expose you to Tetrahydrofuran, which is known to the State of California to cause cancer. For more information go to: www.P65Warnings.ca.gov.

LOW-VOC SPECIALTY SOLVENT CEMENTS

Dura-Gold™ 627L

Code	Description	Qty
55992	½ pt.	24
55998	1 pt.	12



pr-dwv-sw

FEATURES

- One-step, no primer needed*
- LEED compliant
- 2 year shelf life
- Meets ASTM F493 specs
- Low-VOC
- NSF approved for potable water

*when code allows

Gold - Medium body CPVC solvent cement

APPLICATION • Chlorinated polyvinyl chloride (CPVC) solvent cement for joining FlowGuard Gold™ CPVC and fittings • For pipe up to 2" Schedule 40 and 1 ¼" Schedule 80

- RECOMMENDED FOR**
- One step cement • Potable water
 - Pressure pipe • DWV systems



*FlowGuard Gold is a licensed trademark of The Lubrizol Corporation

WARNING: This product can expose you to Tetrahydrofuran, which is known to the State of California to cause cancer. For more information go to: www.P65Warnings.ca.gov.



Hot™ 203L

Code	Description	Qty
55988	¼ pt.	24
55989	½ pt.	24
55990	1 pt.	12
55993	1 qt.	12
55994	1 gal. wide mouth	4



pr-dwv-sw

FEATURES

- Very fast drying
- Excellent in cold weather
- LEED compliant
- 3 year shelf life
- Meets ASTM D2564
- Low-VOC
- NSF approved for potable water

Blue - medium body PVC solvent cement

APPLICATION • Polyvinyl chloride (PVC) solvent cement joins both rigid and flexible PVC pipe and socket-type fittings which meet Class 12454 as defined in ASTM specification D1784 • For all rigid PVC classes up to 6" Schedule 40 and 1 ¼" Schedule 80



- RECOMMENDED FOR**
- Potable water
 - Pressure pipe • Conduit
 - Sewers • DWV systems
 - Irrigation Lines

WARNING: This product can expose you to Tetrahydrofuran, which is known to the State of California to cause cancer. For more information go to: www.P65Warnings.ca.gov.



PVC Electrical Conduit 633L

Code	Description	Qty
55980	½ pt. - clear	24
55983	1 pt. - clear	12
55985	1 qt. - clear	12
55996	1 qt. - gray	12
55979	1 gal. wide mouth clear	4



pr-dwv-sw

FEATURES

- Conduit types I & II
- LEED compliant
- 3 year shelf life
- Meets ASTM D2564
- Low-VOC
- NSF approved for potable water

Clear/Gray - medium body solvent cement

APPLICATION • Clear or gray to match conduit color • Thick formula to reduce runoff • Up to 6" Schedule 40 and Schedule 80

- RECOMMENDED FOR**
- PVC conduit



WARNING: This product can expose you to Tetrahydrofuran, which is known to the State of California to cause cancer. For more information go to: www.P65Warnings.ca.gov.



RECTORSEAL PRIMERS & CLEANERS

Jim™ PR-1L

Code	Description	Qty
55910	¼ pt.	24
55912	½ pt.	24
55914	1 pt.	12
55918	1 qt.	12
55920	1 gal.	4



pr-dwv-sw

FEATURES

- Fast acting
- Superior bonding
- LEED compliant
- 3 year shelf life
- Meets ASTM F656
- NSF approved for potable water
- Low-VOC

Purple - Low-VOC hi-etch primer

APPLICATION • Prepares surfaces for superior bonding strength • For use on PVC and CPVC pipe, tubing and socket-type fittings in both Schedule 40 and Schedule 80

- RECOMMENDED FOR**
- Potable water • Pressure pipe • Conduit
 - Sewers • DWV systems • Irrigation Lines
 - Industrial



RECTORSEAL PRIMERS & CLEANERS

Clear PR-2L

Code	Description	Qty
55972	1 pt.	12
55981	1 qt.	12
55982	1 gal.	4



- FEATURES**
- Fast acting
 - Superior bonding
 - LEED compliant
 - 3 year shelf life
 - Low-VOC
 - Meets ASTM F656
 - NSF approved for potable water

○ Clear - Low-VOC hi-etch primer

APPLICATION • Prepares surfaces for superior bonding strength • For use on PVC and CPVC pipe, tubing and socket-type fittings in both Schedule 40 and Schedule 80

RECOMMENDED FOR

- Potable water • Pressure pipe
- Conduit • Sewers • DWV systems
- Irrigation Lines • Industrial



Also available in gallon can.



Bill™ PR-3

Code	Description	Qty
55705	1 pt.	12
55707	1 qt.	12



- FEATURES**
- PVC & CPVC systems
 - Etches & penetrates
 - 3 year shelf life
 - Low-VOC
 - LEED compliant
 - Meets ASTM F656
 - NSF approved for potable water

○ Clear - Low-VOC hi-etch primer

APPLICATION • Primer for use on all PVC and CPVC pipe, tubing and socket-type fittings to etch and penetrate the surface increasing body strength • Use with all sizes and classes in both Schedule 40 and Schedule 80

RECOMMENDED FOR

- Potable water • Pressure pipe
- Conduit • Sewers • DWV systems
- Irrigation Lines • Industrial



Sam™ CL-3L

Code	Description	Qty
55929	¼ pt.	24
55930	½ pt.	24
55932	1 pt.	12
55934	1 qt.	12
55936	1 gal.	4

- FEATURES**
- Fast acting
 - Safe for potable water
 - 3 year shelf life
 - Low-VOC

○ Clear - cleaner

APPLICATION • Clear cleaner for dissolving grease and dirt to prepare bonding surfaces for solvent cementing • Use for PVC, CPVC and ABS pipe, tubing and socket-type fittings Schedule 40 and Schedule 80

RECOMMENDED FOR

- Potable water • Pressure pipe
- Conduit • Sewers • DWV systems
- Irrigation Lines • Pool, spa, flexible hose • Industrial



Also available in gallon can.

Applicator

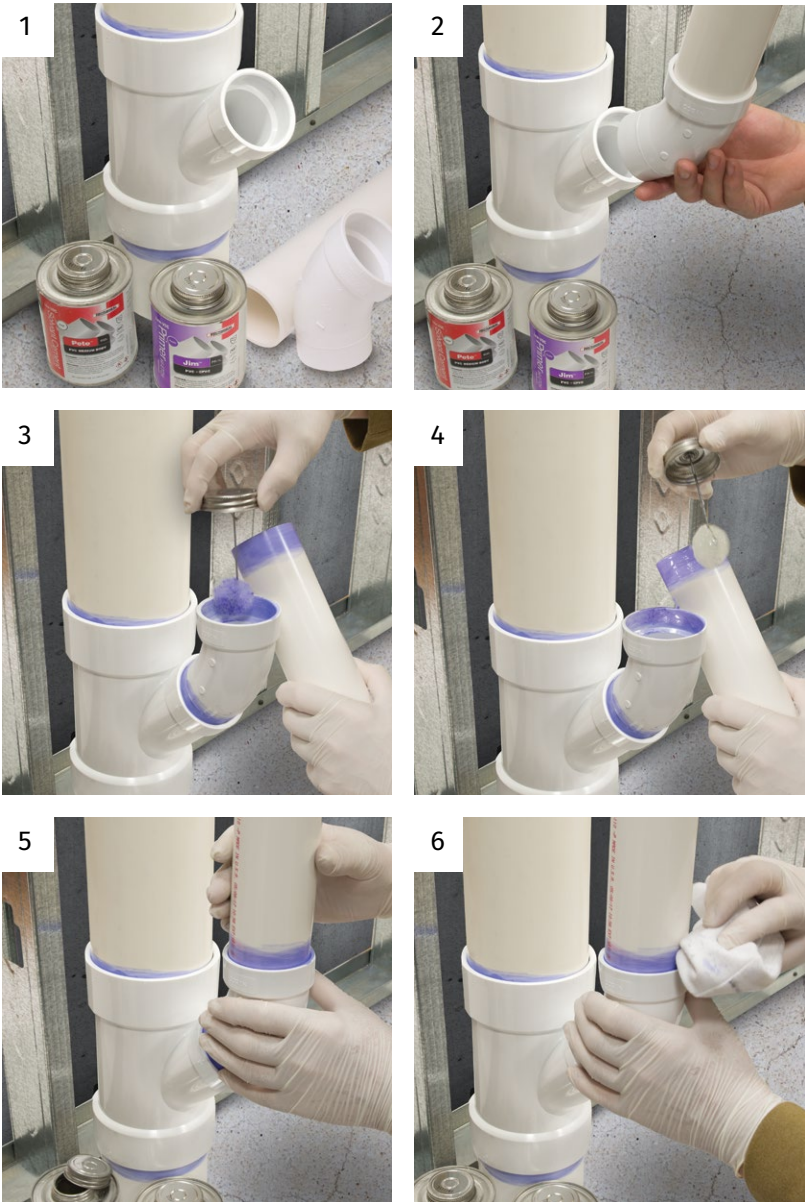
PVC solvent cement roller

Code	Description	Qty.
19073	Roller Applicator	4

Quicker application for larger diameter pipe sizes. Fits both wide mouth can and regular gallon cans.



SOLVENT CEMENT WELDING INSTRUCTIONS



1. Supplies needed to make weld: pipe fittings, primer, cleaner (if needed), solvent cement and deburring tool.

2. Before welding, dry fit the assembly, making sure the pipe and fittings are set snug and correctly positioned. Apply cleaner to both surfaces to be welded.

3. Apply primer to the outside of the male connection and to the inside of the female socket to etch the surfaces to be welded. For ABS pipe use a clear cleaner, not a primer.

4. Apply cement liberally over the primer on the male connection to the depth of the socket. Coat entire surface. Apply a thin coat of cement on the inside of the socket, being careful not to puddle cement, weakening the joint.

5. Once cement is applied, parts must be assembled quickly. If cement dries, recoat both surfaces before welding. Push pipe or fitting into socket with a quarter turn motion until you feel it bottom out. Hold the weld together for 30 seconds to prevent push out. Hold longer as needed for colder weather application.

6. Wipe off excess solvent to finish weld. Allow 15 minutes to set. Both size of pipe and temperature will affect actual cure times.

GENERAL SERVICE RECOMMENDATIONS

	SOLVENT CEMENTS	PVC								ABS	CPVC			PVC/CPVC Multipurpose	
Product Name		Gene 404L	Pete 602L	Arctic 616L	Hot 203L	Electrical Conduit 633L	Electrical Conduit 633L	Gold 844L	Homer 828L		John 647L	Charlie 412L	Dura-Gold 627L	Heavy Duty 811L	Mike 425L
Body		Regular	Medium				Heavy			Medium	Regular	Medium	Heavy	Medium	
Color		Clear	Clear	Clear	Blue	Clear	Gray	Clear	Gray		Black	Orange	Gold	Orange	Light Amber
Low-VOC		✓	✓	✓	✓	✓	✓	✓	✓		✓	✓	✓	✓	✓
Max. Pipe Size Schedule 40		4 in	6 in	6 in	6 in	6 in	6 in	12 in	12 in		6 in	2 in	2 in	12 in	6 in
Max. Pipe Size Schedule 80		-	1 ¼ in	1 ¼ in	1 ¼ in	6 in	6 in	12 in	12 in		6 in	-	1 ¼ in	12 in	-
Max. Pipe Size Schedule 40 (pressure)		2 in	6 in	6 in	6 in	-	-	12 in	12 in		-	2 in	2 in	12 in	2 in
Max. Pipe Size Schedule 80 (pressure)		-	1 ¼ in	1 ¼ in	1 ¼ in	-	-	12 in	12 in		-	-	1 ¼ in	12 in	-
One Step Cement		-	-	-	-	-	-	-	-		-	-	✓	-	-
Potable Water		✓	✓	✓	✓	-	-	✓	✓		-	✓	✓	✓	-
Pressure Pipe		✓	✓	✓	✓	-	-	✓	✓		-	✓	✓	✓	✓
Gas Lines		-	-	-	-	-	-	-	-		-	-	-	-	-
Conduit		✓	✓	✓	✓	✓	✓	✓	✓		-	-	-	-	-
Sewer Pipe		✓	✓	✓	✓	-	-	✓	✓		✓	-	-	-	-
DWV Systems		✓	✓	✓	✓	-	-	✓	✓		✓	✓	✓	✓	✓
Irrigation lines		-	-	-	✓	-	-	-	-		-	-	-	-	-
Pool, Spa, Flexible hose		-	-	-	-	-	-	-	-		-	-	-	-	-
Industrial		-	✓	-	-	-	-	✓	✓		-	-	-	✓	-
Max Service Temp		140°	140°	140°	140°	140°	140°	140°	140°		180°	180°	180°	180°	180°
Hot Water (180°)	-	-	-	-	-	-	-	-		-	✓	✓	✓	-	
Recommended Application Temp	40°–120°F	40°–120°F	0°–120°F	40°–120°F	40°–120°F	40°–120°F	40°–120°F	40°–120°F		40°–120°F	40°–120°F	40°–120°F	40°–120°F	40°–120°F	
Cure Time	Fast	Fast	Fast	Very Fast	Fast	Fast	Medium	Medium		Fast	Fast	Fast	Medium	Fast	
LEED Compliant	✓	✓	✓	✓	✓	✓	✓	✓		-	✓	✓	✓	-	
Product code - Qtr. Pint (24)	55901	55922	-	55988	-	-	-	-		55938	55956	-	-	55969	
Product code - Half Pint (24)	55902	55924	-	55989	55980	-	55951	-		55940	55957	55992	-	55970	
Product code - Pint (12)	55904	55926	55919	55990	55983	-	55952	55961		55942	-	55998	55967	55973	
Product code - Quart (12)	55906	55928	55948	55993	55985	55996	55954	55963		55944	-	-	55968	55974	
Product code - Gallon (4)	55908	55916	55953	55994	55979	-	55955	55964		-	-	-	-	-	
Shelf Life	3 year	3 year	3 year	3 year	3 year	3 year	3 year	3 year		2 year	2 year	2 year	2 year	2 year	

	PVC CPVC	PVC CPVC	PVC CPVC	PVC/CPVC ABS
	Jim PR-1L	Clear PR-2L	Bill PR-3	Sam CL-3L
	Hi-Etch Primer			Cleaner
	Purple	Clear	Clear	Clear
	✓	✓	✓	✓
	All	All	All	All
	All	All	All	All
	All	All	All	All
	All	All	All	All
	-	-	-	-
	✓	✓	✓	✓
	✓	✓	✓	✓
	-	-	-	-
	✓	✓	✓	✓
	✓	✓	✓	✓
	✓	✓	✓	✓
	-	-	-	✓
	✓	✓	✓	✓
	180°	180°	180°	-
	✓	✓	✓	✓
	-15°–120°F	-15°–120°F	-15°–120°F	-15°–120°F
	-	-	-	-
	✓	✓	✓	-
	55910	-	-	55929
	55912	-	-	55930
	55914	55972	55705	55932
	55918	55981	55707	55934
	55920	55982	-	55936
	3 year	3 year	3 year	3 year



A CSW Industrials Company

PLUMBING DIVISION

RectorSeal provides industry-leading digital and print support materials for its extensive chemical and mechanical solutions that include:

- Technical Product Information
- Marketing Support Materials
- Engaging Product Demonstration Videos
- Informative SDS and Product Data Sheets
- On-demand and Live Training and Webinars
- Learning Management System (LMS) support via RectorSeal Academy
- Informative Distributor and Sales Representative Tools
- Industry-related Tradeshow and Events Information

For complete details, visit www.rectorseal.com

For the latest product enhancements, news, and updated information, please follow RectorSeal's social media channels.



facebook.com/rectorseal



linkedin.com/company/rectorseal



twitter.com/rectorseal



instagram.com/rectorseal



youtube.com/rectorsealcorp

All information is believed to be current at the time of printing, but our policy is one of continuous development. RectorSeal makes no warranties, express or implied, as to its accuracy. RectorSeal reserves the right to discontinue, update or change the information at any time without notice or without incurring obligations.

RectorSeal® • 2601 Spenwick Drive, Houston, TX 77055, USA • 713-263-8001 • rectorseal.com

RectorSeal®, the logos and other trademarks are property of RectorSeal, LLC, its affiliates or its licensors and are protected by copyright, trademark and other intellectual property laws, and may not be used without permission. RectorSeal reserves the right to change specifications without prior notice. ©2023 RectorSeal. All rights reserved. R50011 06/23



water and gas connectors

HVAC PLUMBING

S O L U T I O N S



rectorseal.com





Falcon is a premier full port corrugated stainless steel flexible water and gas connectors manufacturer. Since 1981, Falcon has been at the forefront of product innovation and is responsible for introducing corrugated stainless steel water and gas connectors to the United States.

Using only the highest quality raw materials, state-of-the-art manufacturing, and strict quality control systems has helped Falcon products to offer impressive flexibility, increased flow, and tensile strength. Those are only a few reasons why RectorSeal offers Falcon stainless steel products.

RectorSeal's mission, since day one, has been to create added value while developing and manufacturing superior products for the plumbing and water treatment supply chain. The Falcon family of products fits that mission by providing a complete solution for water heater installation and maintenance requirements.



APPLICATION OVERVIEW

Complete Water and Gas Connector Solutions

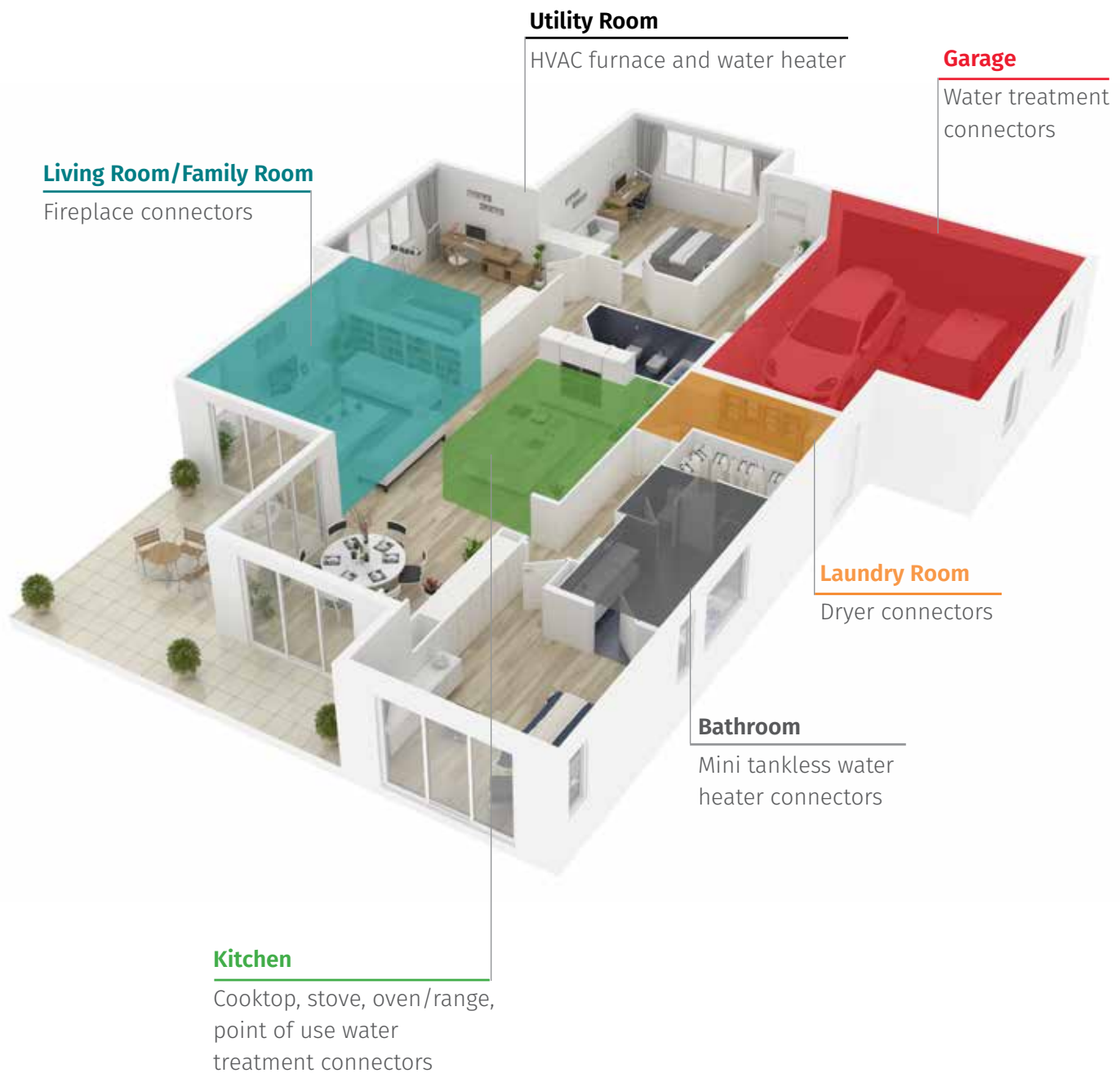


TABLE OF CONTENTS

FALCON WATER CONNECTION

Potable Water Expansion Tanks	
Thermal Expansion Tanks	6
Size Selection Chart	6
Water Heater Connectors	
GEN-U-Flex - 3/4" O.D.	9
Super-Flex - 3/4" I.D.	9
Ultra-Flex - 3/4" I.D.	9
Copper sweat	9
1/2" I.D.	9
Commerical Water Connectors	
1" I.D.	10
1-1/4" I.D.	10
1-1/2" I.D.	10
2" I.D.	10
Specialty Connectors	
Copper press	11
Pex A	11
Pex B/C	11
Push to connect	11
Water Softener Connectors	
3/4" I.D.	12
Nylon threaded	12
Male X Female	12
Clack™* quick disconnect	12
Copper sweat	12
Braided Water Connectors	
3/4" I.D.	13
1" I.D.	13
1-1/4" I.D.	13
1-1/2" I.D.	13
2" I.D.	13

FALCON GAS CONNECTION

Coated Connectors	
3/8" O.D. (1/4" I.D.)	17
Connector with fittings	17
Connector with straight valve	17
Fittings	17
Valves	17
1/2" O.D. (3/8" I.D.)	18
Connector with fittings	18
Connector with straight ball valve	18
Fittings	18
Valves	18
5/8" O.D. (1/2" I.D.)	19
Connector with straight valve	19
Connector with straight ball valve	20
Fittings	20
Valves	20
1" O.D. (3/4" I.D.)	20
Connector with fittings	20
Fittings	20
1-1/4" O.D. (1" I.D.)	21
Connector with fittings	21
Fittings	21
BTU Rating Chart	21

SPECIALTY PRODUCTS

Specialty Products	
RectorSeal T Plus 2®	24
Dura-Gold™ 627L	24
Nokorode® Aqua Flux™	25
Calci-free™	25
Calci-flush™	25
TripleGuard™ ACTIVE	26
RSH-50 DB	26

* Clack is a registered trademark of the Clack Company

Water Connection

Potable Water Expansion Tanks

Water Heater Connectors

Commercial Water Connectors

Specialty Connectors

Water Softener Connectors

Braided Water Connectors





THERMAL EXPANSION TANKS

Safe and secure under pressure.



THERMAL EXPANSION TANKS

Potable Water Expansion Tanks

For water heaters and boilers

Code	Description	Qty
EXPTMINI	Mini Thermal expansion tank - 1/2" MIP SS connection	1
EXPT2	Thermal expansion tank - 2.1 gallon - 3/4" MIP SS connection	1
EXPT4	Thermal expansion tank - 4.8 gallon - 3/4" MIP SS connection	1
EXPT10	Thermal expansion tank - 10.1 gallon - 3/4" MIP SS connection	1
EXPT14	Thermal expansion tank - 14.5 gallon - 1" FIP SS connection	1



FEATURES

- 16 gauge cold rolled steel tank
- 100% BUTYL rubber diaphragm
- Stainless steel connection
- 100% pressure tested
- Brass air valve with o-ring seal

APPLICATION • Absorb excess pressure created by thermal expansion in hot water heating systems

RECOMMENDED FOR

- Commercial and residential water heaters
- Mini tankless water heaters
- Boilers



Problem

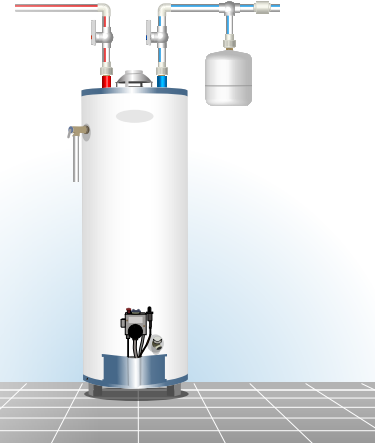
Adding a backflow preventer, check valve, or water meter with a check valve creates a closed loop system.

When water heats up, it expands with no place to go except through the relief valve.



Solution

Installed on the cold water inlet, the thermal expansion tank provides a reservoir for the water to expand.



Size selection chart

Volume (Gallons)	Maximum Water temperature			
	130° F	140° F	160° F	180° F
30	EXPT2	EXPT2	EXPT2	EXPT2
40	EXPT2	EXPT2	EXPT2	EXPT2
50	EXPT2	EXPT2	EXPT2	EXPT4
60	EXPT2	EXPT2	EXPT2	EXPT4
80	EXPT2	EXPT4	EXPT4	EXPT4
100	EXPT4	EXPT4	EXPT4	EXPT10
120	EXPT4	EXPT4	EXPT4	EXPT10
150	EXPT4	EXPT4	EXPT10	EXPT10
175	EXPT4	EXPT10	EXPT10	EXPT10

Sizing based on water heater recovery from 40° F, water supply pressure of 60 PSIG, and relief valve set at 150 PSIG. Adjust tank precharge to equal incoming water pressure.



WARNING • This product can expose you to chemicals including Carbon Disulfide, which is known to the State of California to cause cancer, birth defects or other reproductive harm. For more information, go to www.P65Warnings.ca.gov.



WATER CONNECTION

Flexible water connectors



- 304 series stainless steel
- Chrome plated brass nuts
- 100% leak tested



Stainless steel hoses designed with
flow performance for high-capacity
water appliances

designed for residential and commercial applications.



WATER CONNECTOR APPLICATIONS



Water connectors are flexible, stainless steel lines designed to connect various equipment to the available water supply.

Commercial and residential applications for the following equipment:

- Boilers
- Softeners
- Tanked Water Heaters
- Tankless Water Heaters
- Pumps
(using over braid connector)
- Water Treatment

WATER CONNECTOR TYPES



Threaded

Traditional, screw on connector for use with metal and plastic threaded male connectors.



Push to Connect

Pushes onto piping. For use with copper, PEX and CPVC pipe.



PEX

Inserted into a PEX line and held in place with ridges on the connector.



Nylon

Threaded, nylon connector used with water softeners.



Copper Sweat

Slips over copper pipe. Can be soldered or cut at bell and soldered into a ball valve.



Copper Press

Solderless copper connector requires professional crimping tool for connection.

Water Heater Connectors

For residential applications

GEN-U-Flex - 3/4" O.D. water connectors		
Code	Description	Qty
GFF030418	3/4" O.D. SS flex with 3/4" FIP X 3/4" FIP X 18"	25
GFF030424	3/4" O.D. SS flex with 3/4" FIP X 3/4" FIP X 24"	25
Super-Flex - 3/4" I.D. water connectors		
FF12	3/4" I.D. SS flex with 3/4" FIP X 3/4" FIP X 12"	25
FF15	3/4" I.D. SS flex with 3/4" FIP X 3/4" FIP X 15"	25
FF18	3/4" I.D. SS flex with 3/4" FIP X 3/4" FIP X 18"	25
FF24	3/4" I.D. SS flex with 3/4" FIP X 3/4" FIP X 24"	25
FF36	3/4" I.D. SS flex with 3/4" FIP X 3/4" FIP X 36"	25
FF48	3/4" I.D. SS flex with 3/4" FIP X 3/4" FIP X 48"	25
FF60	3/4" I.D. SS flex with 3/4" FIP X 3/4" FIP X 60"	25
Ultra-Flex - 3/4" I.D. water connectors		
SWC34006	3/4" I.D. Ultra flex with 3/4" FIP X 3/4" FIP X 6"	25
SWC34012	3/4" I.D. Ultra flex with 3/4" FIP X 3/4" FIP X 12"	25
SWC34015	3/4" I.D. Ultra flex with 3/4" FIP X 3/4" FIP X 15"	25
SWC34018	3/4" I.D. Ultra flex with 3/4" FIP X 3/4" FIP X 18"	25
SWC34024	3/4" I.D. Ultra flex with 3/4" FIP X 3/4" FIP X 24"	25
Copper sweat water connectors		
SWTF15	3/4" I.D. SS flex with 3/4" FIP X 7/8" copper SWT X 15"	25
SWTF18	3/4" I.D. SS flex with 3/4" FIP X 7/8" copper SWT X 18"	25
SWTF24	3/4" I.D. SS flex with 3/4" FIP X 7/8" copper SWT X 24"	25
SWTF13418	3/4" I.D. SS flex with 1" FIP X 7/8" copper SWT X 18"	25
SWTF13424	3/4" I.D. SS flex with 1" FIP X 7/8" copper SWT X 24"	25
1/2" I.D. water connectors		
S0212	1/2" I.D. SS flex with 1/2" FIP X 1/2" FIP X 12"	25
S0216	1/2" I.D. SS flex with 1/2" FIP X 1/2" FIP X 16"	25
S0220	1/2" I.D. SS flex with 1/2" FIP X 1/2" FIP X 20"	25
S0230	1/2" I.D. SS flex with 1/2" FIP X 1/2" FIP X 30"	25
S0236	1/2" I.D. SS flex with 1/2" FIP X 1/2" FIP X 36"	25



FEATURES

- 304 series stainless steel
- Maintains optimal flow with full port design
- 100% leak tested
- Chrome plated brass nuts
- High temp EPDM washer chlorine and chloramine resistant
- No dielectric union required
- 250 maximum PSI
- -40°F to 180°F

CERTIFICATIONS

- Complies to ASME A112.18.6
- Complies to CSA B125.6
- NSF 61 compliant
- NSF 372 compliant

APPLICATION • Corrugated 304 stainless steel flexible connector used to connect the cold and hot water supply lines to water appliances.

RECOMMENDED FOR

- Water heaters
- Mini tankless water heaters



WARNING • This product can expose you to chemicals including Nickel, which is known to the State of California to cause cancer, birth defects or other reproductive harm. For more information, go to www.P65Warnings.ca.gov.

Commercial Water Connectors

For water heaters, softeners and boilers

1" I.D. water connectors		
Code	Description	Qty
SWC112	1" I.D. SS flex with 1" FIP X 1" FIP X 12"	25
SWC118	1" I.D. SS flex with 1" FIP X 1" FIP X 18"	25
SWC124	1" I.D. SS flex with 1" FIP X 1" FIP X 24"	25
SWC136	1" I.D. SS flex with 1" FIP X 1" FIP X 36"	25
1-1/4" I.D. water connectors		
SWC11418	1-1/4" I.D. SS flex with 1-1/4" FIP X 1-1/4" FIP X 18"	25
SWC11424	1-1/4" I.D. SS flex with 1-1/4" FIP X 1-1/4" FIP X 24"	25
1-1/2" I.D. water connectors		
SWC11218	1-1/2" I.D. SS flex with 1-1/2" FIP X 1-1/2" FIP X 18"	25
SWC11224	1-1/2" I.D. SS flex with 1-1/2" FIP X 1-1/2" FIP X 24"	25
2" I.D. water connectors		
SWC218	2" I.D. SS flex with 2" FIP X 2" FIP X 18"	25
SWC224	2" I.D. SS flex with 2" FIP X 2" FIP X 24"	25



FEATURES

- 304 series stainless steel
- Maintains optimal flow with full port design
- 100% leak tested
- Chrome plated brass nuts
- High temp EPDM washer chlorine and chloramine resistant
- No dielectric union required
- 250 maximum PSI
- -40°F to 180°F

CERTIFICATIONS

- Complies to ASME A112.18.6
- Complies to CSA B125.6
- NSF 61 compliant
- NSF 372 compliant

APPLICATION • Corrugated 304 stainless steel flexible connector used to connect the cold and hot water supply lines of higher flow water appliances.

RECOMMENDED FOR

- Commercial water heaters • Boilers
- Water softeners



Specialty Connections

For water heaters and softeners

Copper press water connectors		
Code	Description	Qty
FSP18	3/4" I.D. SS flex with 3/4" FIP X 7/8" copper press X 18"	25
FSP24	3/4" I.D. SS flex with 3/4" FIP X 7/8" copper press X 24"	25
Pex A water connectors		
UPEXFP18	3/4" I.D. SS flex with 3/4" FIP X 3/4" Uponor* Pex X 18"	25
UPEXFP24	3/4" I.D. SS flex with 3/4" FIP X 3/4" Uponor* Pex X 24"	25
Pex B/C water connectors		
PEXGF18	3/4" O.D. SS flex with 3/4" FIP X Pex barb X 18"	25
PEXGF24	3/4" O.D. SS flex with 3/4" FIP X Pex barb X 24"	25
Push to connect water connectors		
PTCPTC3418A	3/4" I.D. SS flex with 3/4" JG PTC X 3/4" JG PTC X 18"	25
PTC34JG18A	3/4" I.D. SS flex with 3/4" JG PTC X 3/4" FIP X 18"	25
PTC34JG24A	3/4" I.D. SS flex with 3/4" JG PTC X 3/4" FIP X 24"	25
PTCFIPV18A	3/4" I.D. SS flex with 3/4" PTCBALL VLV X 3/4" FIP X 18"	25
PTCFIPV24A	3/4" I.D. SS flex with 3/4" PTCBALL VLV X 3/4" FIP X 24"	25
PTC34JGCLKQC18A	3/4" I.D. SS flex with 3/4" JG PTC X Clack QC X 18"	25
PTC34JGCLKQC24A	3/4" I.D. SS flex with 3/4" JG PTC X Clack QC X 24"	25
PTC34JG1N18A	3/4" I.D. SS flex with 3/4" JG PTC X 1" nylon FIP X 18"	25
PTC34JG1N24A	3/4" I.D. SS flex with 3/4" JG PTC X 1" nylon FIP X 24"	25
PTC34JG114N18A	3/4" I.D. SS flex with 3/4" JG PTC X 1-1/4" nylon FIP X 18"	25
PTC1JG1N18A	1" I.D. SS flex with 1" JG PTC X 1" nylon FIP X 18"	25
PTC1JG1N24A	1" I.D. SS flex with 1" JG PTC X 1" nylon FIP X 24"	25
PTC1JGCLKQC18A	1" I.D. SS flex with 1" JG PTC X Clack QC X 18"	25
PTC1JGCLKQC24A	1" I.D. SS flex with 1" JG PTC X Clack QC X 24"	25
PTC1JG114N18A	1" I.D. SS flex with 1" JG PTC X 1-1/4" nylon FIP X 18"	25
PTC1JG114N24A	1" I.D. SS flex with 1" JG PTC X 1-1/4" nylon FIP X 24"	25



FEATURES

- 304 series stainless steel
- Maintains optimal flow with full port design
- 100% leak tested
- Chrome plated brass nuts
- High temp EPDM washer chlorine and chloramine resistant
- No dielectric union required
- 250 maximum PSI
- -40°F to 180°F

CERTIFICATIONS

- Complies to ASME A112.18.6
- Complies to CSA B125.6
- NSF 61 compliant
- NSF 372 compliant

*Uponor is a registered trademark of Uponor Corporation

APPLICATION • Corrugated 304 stainless steel flexible connector used to connect the cold and hot water supply lines to any water appliance. Various specialty connection options for copper, CPVC, Pex A, and Pex B/C.

RECOMMENDED FOR

- Water heaters • Water softeners



Water Softener Connectors

For softeners & commercial heaters

3/4" I.D. water connectors		
Code	Description	Qty
SWC13418	3/4" I.D. SS flex with 1" FIP X 3/4" FIP X 18"	25
SWC13424	3/4" I.D. SS flex with 1" FIP X 3/4" FIP X 24"	25
Nylon threaded		
SWCN13418	3/4" I.D. SS flex with 1" nylon FIP X 3/4" FIP X 18"	25
SWCN1143418	3/4" I.D. SS flex with 1-1/4" nylon FIP X 3/4" FIP X 18"	25
SWCN1143424	3/4" I.D. SS flex with 1-1/4" nylon FIP X 3/4" FIP X 24"	25
SWCN114112	1" I.D. SS flex with 1-1/4" nylon FIP X 1" FIP X 12"	25
SWCN114118	1" I.D. SS flex with 1-1/4" nylon FIP X 1" FIP X 18"	25
SWCN114124	1" I.D. SS flex with 1-1/4" nylon FIP X 1" FIP X 24"	25
Male X Female water connectors		
FM18	3/4" I.D. SS flex with 3/4" FIP X 3/4" MIP X 18"	25
FM24	3/4" I.D. SS flex with 3/4" FIP X 3/4" MIP X 24"	25
FM118	1" I.D. SS flex with 1" FIP X 1" MIP X 18"	25
FM124	1" I.D. SS flex with 1" FIP X 1" MIP X 24"	25
Clack™ quick disconnect water connectors		
CLKQC34FIP18	3/4" I.D. SS flex with Clack QC X 3/4" FIP X 18"	25
CLKQC34FIP24	3/4" I.D. SS flex with Clack QC X 3/4" FIP X 24"	25
CLKQC1FIP18	1" I.D. SS flex with Clack QC X 1" FIP X 18"	25
CLKQC1FIP24	1" I.D. SS flex with Clack QC X 1" FIP X 24"	25
CLKQCQC18	1" I.D. SS flex with Clack QC X Clack QC X 18"	25
CLKQCQC24	1" I.D. SS flex with Clack QC X Clack QC X 24"	25
ClackSET	Nut, split ring, o-ring for Clack	100
Copper sweat water connectors		
SWTF115	1" I.D. SS flex with 1" FIP X 1-1/8" copper SWT X 15"	25
SWTF118	1" I.D. SS flex with 1" FIP X 1-1/8" copper SWT X 18"	25
SWTF124	1" I.D. SS flex with 1" FIP X 1-1/8" copper SWT X 24"	25



FEATURES

- 304 series stainless steel
- Maintains optimal flow with full port design
- 100% leak tested
- Chrome plated brass nuts
- High temp EPDM washer chlorine and chloramine resistant
- No dielectric union required
- 250 maximum PSI
- -40°F to 180°F

CERTIFICATIONS

- Complies to ASME A112.18.6
- Complies to CSA B125.6
- NSF 61 compliant
- NSF 372 compliant

APPLICATION • Corrugated 304 stainless steel flexible connector used to connect the cold and hot water supply lines to water appliances.

Nylon thread and Clack QC allow for connection to water softener bypasses.

RECOMMENDED FOR

- Water softeners • Commercial water heaters



Braided Water Connectors

For pumps, softeners and boilers

3/4" I.D. water connectors		
Code	Description	Qty
SWC34018OVERBRAID	3/4" I.D. SS flex with 3/4" FIP X 3/4" FIP X 18" OB	25
SWC34024OVERBRAID	3/4" I.D. SS flex with 3/4" FIP X 3/4" FIP X 24" OB	25
1" I.D. water connectors		
SWC118OVERBRAID	1" I.D. SS flex with 1" FIP X 1" FIP X 18" OB	25
SWC124OVERBRAID	1" I.D. SS flex with 1" FIP X 1" FIP X 24" OB	25
1-1/4" water connectors		
SWC11418OVERBRAID	1-1/4" I.D. SS flex with 1-1/4" FIP X 1-1/4" FIP X 18" OB	25
SWC11424OVERBRAID	1-1/4" I.D. SS flex with 1-1/4" FIP X 1-1/4" FIP X 24" OB	25
1-1/2" I.D. water connectors		
SWC11218OVERBRAID	1-1/2" I.D. SS flex with 1-1/2" FIP X 1-1/2" FIP X 18" OB	10
SWC11224OVERBRAID	1-1/2" I.D. SS flex with 1-1/2" FIP X 1-1/2" FIP X 24" OB	10
SWC11236OVERBRAID	1-1/2" I.D. SS flex with 1-1/2" FIP X 1-1/2" FIP X 36" OB	10
2" I.D. water connectors		
SWC218OVERBRAID	2" I.D. SS flex with 2" FIP X 2" FIP X 18" OB	10
SWC224OVERBRAID	2" I.D. SS flex with 2" FIP X 2" FIP X 24" OB	10



FEATURES

- 304 series stainless steel
- Maintains optimal flow with full port design
- 100% leak tested
- Chrome plated brass nuts
- High temp EPDM washer chlorine and chloramine resistant
- No dielectric union required
- 300 maximum PSI
- -40°F to 180°F

CERTIFICATIONS

- Complies to ASME A112.18.6
- Complies to CSA B125.6
- NSF 61 compliant
- NSF 372 compliant

APPLICATION • Braided 304 stainless steel flexible connector used to connect the cold and hot water supply lines to water appliances.

Overbraid allows for repeated bending and vibration.

RECOMMENDED FOR

- Water heaters • Water softeners • Pumps
- Boilers



Gas Connection

Coated Connectors

Gas Ball Valves

Fittings

Valves





GAS CONNECTION

Flexible coated connectors



- 304 series stainless steel
- Epoxy resin coated
- 100% leak tested

Coated stainless steel hoses
designed to provide a safe
connection to residential and
commercial gas equipment

design for gas appliances.



APPLICATION

- Corrugated 304 stainless steel coated flexible connector used to connect appliances to the gas supply line

RECOMMENDED FOR

- Gas ranges, gas dryers, water heaters, furnaces, tankless water heaters, boilers, fireplaces, fire logs, space heaters

FEATURES

- 304 series stainless steel
- Eco-friendly trivalent chromium fittings
- Epoxy resin coated
- 100% leak tested
- CSA tested listed & approved

CERTIFICATIONS

- Complies to ANSI Z21.24/CSA 6.10
- Complies to ANSI Z21.75/CSA 6.27



WARNING • This product can expose you to chemicals including Chromium (hexavalent compounds), which is known to the State of California to cause cancer, birth defects or other reproductive harm. For more information, go to www.P65Warnings.ca.gov.

Contact: RectorSeal®

P 713-263-8001 | 800-231-3345

F 713-263-7577 | 800-441-0051

W rectorseal.com

FALCON GAS CONNECTING SOLUTIONS

3/8" O.D. (1/4" I.D.) Coated gas connector

Connector with fittings

Code	Description	Qty
SGC38ODC12M12F12	1/4" I.D. SS coated gas connector – 1/2" MIP X 1/2" FIP X 12"	25
SGC38ODC12M12M12	1/4" I.D. SS coated gas connector – 1/2" MIP X 1/2" MIP X 12"	25
SGC38ODC12M38F38	1/4" I.D. SS coated gas connector – 3/8" MIP X 3/8" FIP X 12"	25
SGC38ODC18M12F12	1/4" I.D. SS coated gas connector – 1/2" MIP X 1/2" FIP X 18"	25
SGC38ODC18M12M12	1/4" I.D. SS coated gas connector – 1/2" MIP X 1/2" MIP X 18"	25
SGC38ODC18M38F38	1/4" I.D. SS coated gas connector – 3/8" MIP X 3/8" FIP X 18"	25
SGC38ODC24M12F12	1/4" I.D. SS coated gas connector – 1/2" MIP X 1/2" FIP X 24"	25
SGC38ODC24M12M12	1/4" I.D. SS coated gas connector – 1/2" MIP X 1/2" MIP X 24"	25
SGC38ODC24M38F38	1/4" I.D. SS coated gas connector – 3/8" MIP X 3/8" FIP X 24"	25
SGC38ODC30M12F12	1/4" I.D. SS coated gas connector – 1/2" MIP X 1/2" FIP X 30"	25
SGC38ODC30M12M12	1/4" I.D. SS coated gas connector – 1/2" MIP X 1/2" MIP X 30"	25
SGC38ODC30M38F38	1/4" I.D. SS coated gas connector – 3/8" MIP X 3/8" FIP X 30"	25
SGC38ODC36M12F12	1/4" I.D. SS coated gas connector – 1/2" MIP X 1/2" FIP X 36"	25
SGC38ODC36M12M12	1/4" I.D. SS coated gas connector – 1/2" MIP X 1/2" MIP X 36"	25
SGC38ODC36M38F38	1/4" I.D. SS coated gas connector – 3/8" MIP X 3/8" FIP X 36"	25
SGC38ODC48M12F12	1/4" I.D. SS coated gas connector – 1/2" MIP X 1/2" FIP X 48"	25
SGC38ODC48M12M12	1/4" I.D. SS coated gas connector – 1/2" MIP X 1/2" MIP X 48"	25
SGC38ODC48M38F38	1/4" I.D. SS coated gas connector – 3/8" MIP X 3/8" FIP X 48"	25
SGC38ODC60M12F12	1/4" I.D. SS coated gas connector – 1/2" MIP X 1/2" FIP X 60"	25
SGC38ODC60M12M12	1/4" I.D. SS coated gas connector – 1/2" MIP X 1/2" MIP X 60"	25
SGC38ODC60M38F38	1/4" I.D. SS coated gas connector – 3/8" MIP X 3/8" FIP X 60"	25
SGC38ODC72M12F12	1/4" I.D. SS coated gas connector – 1/2" MIP X 1/2" FIP X 72"	25
SGC38ODC72M12M12	1/4" I.D. SS coated gas connector – 1/2" MIP X 1/2" MIP X 72"	25
SGC38ODC72M38F38	1/4" I.D. SS coated gas connector – 3/8" MIP X 1/2" FIP X 72"	25

Connector with straight valve

SGC38ODS1C12	1/4" I.D. SS coated GC – 1/2" MIP X 1/2" FIP STR VLV X 12"	25
SGC38ODS1C18	1/4" I.D. SS coated GC – 1/2" MIP X 1/2" FIP STR VLV X 18"	25
SGC38ODS1C24	1/4" I.D. SS coated GC – 1/2" MIP X 1/2" FIP STR VLV X 24"	25
SGC38ODS1C30	1/4" I.D. SS coated GC – 1/2" MIP X 1/2" FIP STR VLV X 30"	25
SGC38ODS1C36	1/4" I.D. SS coated GC – 1/2" MIP X 1/2" FIP STR VLV X 36"	25
SGC38ODS1C48	1/4" I.D. SS coated GC – 1/2" MIP X 1/2" FIP STR VLV X 48"	25
SGC38ODS1C60	1/4" I.D. SS coated GC – 1/2" MIP X 1/2" FIP STR VLV X 60"	25
SGC38ODS1C72	1/4" I.D. SS coated GC – 1/2" MIP X 1/2" FIP STR VLV X 72"	25

Fittings

PS1	3/8" O.D. (5/8"-18) flare X 3/8" FIP	250
PS10	3/8" O.D. (5/8"-18) flare X 3/8" MIP	250
PSTWO	3/8" O.D. (5/8"-18) flare X 1/2" FIP	300
PS11	3/8" O.D. (5/8"-18) flare X 1/2" MIP	300

Valves

BS138FL	3/8" O.D. (5/8"-18) flare X 1/2" FIP gas valve	10
BS112FIP	1/2" FIP X 1/2" FIP gas valve - STD port	10

FALCON GAS CONNECTING SOLUTIONS

1/2" O.D. (3/8" I.D.) Coated gas connector

Connector with fittings			
Code	Description		Qty
SGC12ODC12M12F12	3/8" I.D. SS coated gas connector - 1/2" MIP X 1/2" FIP X 12"		25
SGC12ODC12M12M12	3/8" I.D. SS coated gas connector - 1/2" MIP X 1/2" MIP X 12"		25
SGC12ODC12M38M38	3/8" I.D. SS coated gas connector - 3/8" MIP X 3/8" MIP X 12"		25
SGC12ODC18M12F12	3/8" I.D. SS coated gas connector - 1/2" MIP X 1/2" FIP X 18"		25
SGC12ODC18M12M12	3/8" I.D. SS coated gas connector - 1/2" MIP X 1/2" MIP X 18"		25
SGC12ODC18M38M38	3/8" I.D. SS coated gas connector - 3/8" MIP X 3/8" MIP X 18"		25
SGC12ODC24M12F12	3/8" I.D. SS coated gas connector - 1/2" MIP X 1/2" FIP X 24"		25
SGC12ODC24M12M12	3/8" I.D. SS coated gas connector - 1/2" MIP X 1/2" MIP X 24"		25
SGC12ODC24M38M38	3/8" I.D. SS coated gas connector - 3/8" MIP X 3/8" MIP X 24"		25
SGC12ODC30M12F12	3/8" I.D. SS coated gas connector - 1/2" MIP X 1/2" FIP X 30"		25
SGC12ODC30M12M12	3/8" I.D. SS coated gas connector - 1/2" MIP X 1/2" MIP X 30"		25
SGC12ODC30M38M38	3/8" I.D. SS coated gas connector - 3/8" MIP X 3/8" MIP X 30"		25
SGC12ODC36M12F12	3/8" I.D. SS coated gas connector - 1/2" MIP X 1/2" FIP X 36"		25
SGC12ODC36M12M12	3/8" I.D. SS coated gas connector - 1/2" MIP X 1/2" MIP X 36"		25
SGC12ODC36M38M38	3/8" I.D. SS coated gas connector - 3/8" MIP X 3/8" MIP X 36"		25
SGC12ODC48M12F12	3/8" I.D. SS coated gas connector - 1/2" MIP X 1/2" FIP X 48"		25
SGC12ODC48M12M12	3/8" I.D. SS coated gas connector - 1/2" MIP X 1/2" MIP X 48"		25
SGC12ODC48M38M38	3/8" I.D. SS coated gas connector - 3/8" MIP X 3/8" MIP X 48"		25
SGC12ODC60M12F12	3/8" I.D. SS coated gas connector - 1/2" MIP X 1/2" FIP X 60"		25
SGC12ODC60M12M12	3/8" I.D. SS coated gas connector - 1/2" MIP X 1/2" MIP X 60"		25
SGC12ODC60M38M38	3/8" I.D. SS coated gas connector - 3/8" MIP X 3/8" MIP X 60"		25
SGC12ODC72M12F12	3/8" I.D. SS coated gas connector - 1/2" MIP X 1/2" FIP X 72"		25
SGC12ODC72M12M12	3/8" I.D. SS coated gas connector - 1/2" MIP X 1/2" MIP X 72"		25
SGC12ODC72M38M38	3/8" I.D. SS coated gas connector - 3/8" MIP X 3/8" MIP X 72"		25
Connector with straight ball valve			
SGC12ODS1C12	3/8" I.D. SS coated GC - 1/2" MIP X 1/2" FIP STR VLV X 12"		25
SGC12ODS1C18	3/8" I.D. SS coated GC - 1/2" MIP X 1/2" FIP STR VLV X 18"		25
SGC12ODS1C24	3/8" I.D. SS coated GC - 1/2" MIP X 1/2" FIP STR VLV X 24"		25
SGC12ODS1C30	3/8" I.D. SS coated GC - 1/2" MIP X 1/2" FIP STR VLV X 30"		25
SGC12ODS1C36	3/8" I.D. SS coated GC - 1/2" MIP X 1/2" FIP STR VLV X 36"		25
SGC12ODS1C48	3/8" I.D. SS coated GC - 1/2" MIP X 1/2" FIP STR VLV X 48"		25
SGC12ODS1C60	3/8" I.D. SS coated GC - 1/2" MIP X 1/2" FIP STR VLV X 60"		25
SGC12ODS1C72	3/8" I.D. SS coated GC - 1/2" MIP X 1/2" FIP STR VLV X 72"		25
Fittings			
PS3	1/2" O.D. (3/4"-16) flare X 3/8" FIP		250
PS12	1/2" O.D. (3/4"-16) flare X 3/8" MIP		250
PS4	1/2" O.D. (3/4"-16) flare X 1/2" FIP		200
PS13	1/2" O.D. (3/4"-16) flare X 1/2" MIP		200
PS5	1/2" O.D. (3/4"-16) flare X 3/4" FIP		300
PS14	1/2" O.D. (3/4"-16) flare X 3/4" MIP		200
Valves			
BS112F	1/2" O.D. (3/4"-16) flare X 1/2" FIP gas valve		10
BS112FIP	1/2" FIP X 1/2" FIP gas valve - STD port		10

FALCON GAS CONNECTING SOLUTIONS

5/8" O.D. (1/2" I.D.) Coated gas connector

Connector with fittings		
Code	Description	Qty
SGC58ODC12M12F12	1/2" I.D. SS coated gas connector – 1/2" MIP X 1/2" FIP X 12"	25
SGC58ODC12M12M12	1/2" I.D. SS coated gas connector – 1/2" MIP X 1/2" MIP X 12"	25
SGC58ODC12M12M34	1/2" I.D. SS coated gas connector – 1/2" MIP X 3/4" MIP X 12"	25
SGC58ODC12M34F34	1/2" I.D. SS coated gas connector – 3/4" MIP X 3/4" FIP X 12"	25
SGC58ODC12M34M34	1/2" I.D. SS coated gas connector – 3/4" MIP X 3/4" MIP X 12"	25
SGC58ODC18M12F12	1/2" I.D. SS coated gas connector – 1/2" MIP X 1/2" FIP X 18"	25
SGC58ODC18M12M12	1/2" I.D. SS coated gas connector – 1/2" MIP X 1/2" MIP X 18"	25
SGC58ODC18M12M34	1/2" I.D. SS coated gas connector – 1/2" MIP X 3/4" MIP X 18"	25
SGC58ODC18M34F34	1/2" I.D. SS coated gas connector – 3/4" MIP X 3/4" FIP X 18"	25
SGC58ODC18M34M34	1/2" I.D. SS coated gas connector – 3/4" MIP X 3/4" MIP X 18"	25
SGC58ODC24M12F12	1/2" I.D. SS coated gas connector – 1/2" MIP X 1/2" FIP X 24"	25
SGC58ODC24M12M12	1/2" I.D. SS coated gas connector – 1/2" MIP X 1/2" MIP X 24"	25
SGC58ODC24M12M34	1/2" I.D. SS coated gas connector – 1/2" MIP X 3/4" MIP X 24"	25
SGC58ODC24M34F34	1/2" I.D. SS coated gas connector – 3/4" MIP X 3/4" FIP X 24"	25
SGC58ODC24M34M34	1/2" I.D. SS coated gas connector – 3/4" MIP X 3/4" MIP X 24"	25
SGC58ODC30M12F12	1/2" I.D. SS coated gas connector – 1/2" MIP X 1/2" FIP X 30"	25
SGC58ODC30M12M12	1/2" I.D. SS coated gas connector – 1/2" MIP X 1/2" MIP X 30"	25
SGC58ODC30M12M34	1/2" I.D. SS coated gas connector – 1/2" MIP X 3/4" MIP X 30"	25
SGC58ODC30M34F34	1/2" I.D. SS coated gas connector – 3/4" MIP X 3/4" FIP X 30"	25
SGC58ODC30M34M34	1/2" I.D. SS coated gas connector – 3/4" MIP X 3/4" MIP X 30"	25
SGC58ODC36M12F12	1/2" I.D. SS coated gas connector – 1/2" MIP X 1/2" FIP X 36"	25
SGC58ODC36M12M12	1/2" I.D. SS coated gas connector – 1/2" MIP X 1/2" MIP X 36"	25
SGC58ODC36M12M34	1/2" I.D. SS coated gas connector – 1/2" MIP X 3/4" MIP X 36"	25
SGC58ODC36M34F34	1/2" I.D. SS coated gas connector – 3/4" MIP X 3/4" FIP X 36"	25
SGC58ODC36M34M34	1/2" I.D. SS coated gas connector – 3/4" MIP X 3/4" MIP X 36"	25
SGC58ODC48M12F12	1/2" I.D. SS coated gas connector – 1/2" MIP X 1/2" FIP X 48"	25
SGC58ODC48M12M12	1/2" I.D. SS coated gas connector – 1/2" MIP X 1/2" MIP X 48"	25
SGC58ODC48M12M34	1/2" I.D. SS coated gas connector – 1/2" MIP X 3/4" MIP X 48"	25
SGC58ODC48M34F34	1/2" I.D. SS coated gas connector – 3/4" MIP X 3/4" FIP X 48"	25
SGC58ODC48M34M34	1/2" I.D. SS coated gas connector – 3/4" MIP X 3/4" MIP X 48"	25
SGC58ODC60M12F12	1/2" I.D. SS coated gas connector – 1/2" MIP X 1/2" FIP X 60"	25
SGC58ODC60M12M12	1/2" I.D. SS coated gas connector – 1/2" MIP X 1/2" MIP X 60"	25
SGC58ODC60M12M34	1/2" I.D. SS coated gas connector – 1/2" MIP X 3/4" MIP X 60"	25
SGC58ODC60M34F34	1/2" I.D. SS coated gas connector – 3/4" MIP X 3/4" FIP X 60"	25
SGC58ODC60M34M34	1/2" I.D. SS coated gas connector – 3/4" MIP X 3/4" MIP X 60"	25
SGC58ODC72M12F12	1/2" I.D. SS coated gas connector – 1/2" MIP X 1/2" FIP X 72"	25
SGC58ODC72M12M12	1/2" I.D. SS coated gas connector – 1/2" MIP X 1/2" MIP X 72"	25
SGC58ODC72M12M34	1/2" I.D. SS coated gas connector – 1/2" MIP X 3/4" MIP X 72"	25
SGC58ODC72M34F34	1/2" I.D. SS coated gas connector – 3/4" MIP X 3/4" FIP X 72"	25
SGC58ODC72M34M34	1/2" I.D. SS coated gas connector – 3/4" MIP X 3/4" MIP X 72"	25

FALCON GAS CONNECTING SOLUTIONS

(...continued) 5/8" O.D. (1/2" I.D.) Coated gas connector

Connector with straight ball valve		
Code	Description	Qty
SGC58ODS2C18	1/2" I.D. SS coated GC - 1/2" MIP X 1/2" FIP STR VLV X 18"	25
SGC58ODS2C24	1/2" I.D. SS coated GC - 1/2" MIP X 1/2" FIP STR VLV X 24"	25
SGC58ODS2C30	1/2" I.D. SS coated GC - 1/2" MIP X 1/2" FIP STR VLV X 30"	25
SGC58ODS2C36	1/2" I.D. SS coated GC - 1/2" MIP X 1/2" FIP STR VLV X 36"	25
SGC58ODS2C48	1/2" I.D. SS coated GC - 1/2" MIP X 1/2" FIP STR VLV X 48"	25
SGC58ODS2C60	1/2" I.D. SS coated GC - 1/2" MIP X 1/2" FIP STR VLV X 60"	25
SGC58ODS2C72	1/2" I.D. SS coated GC - 1/2" MIP X 1/2" FIP STR VLV X 72"	25
SGC58ODS3C18	1/2" I.D. SS coated GC - 1/2" MIP X 3/4" FIP STR VLV X 18"	25
SGC58ODS3C24	1/2" I.D. SS coated GC - 1/2" MIP X 3/4" FIP STR VLV X 24"	25
SGC58ODS3C36	1/2" I.D. SS coated GC - 1/2" MIP X 3/4" FIP STR VLV X 36"	25
SGC58ODS3C48	1/2" I.D. SS coated GC - 1/2" MIP X 3/4" FIP STR VLV X 48"	25
Fittings		
PS6	5/8" O.D. (15/16"-16) flare X 1/2" FIP	200
PS15	5/8" O.D. (15/16"-16) flare X 1/2" MIP	200
PS7	5/8" O.D. (15/16"-16) flare X 3/4" FIP	200
PS16	5/8" O.D. (15/16"-16) flare X 3/4" MIP	200
Valves		
BS11516FL	5/8" O.D. (15/16"-16) flare X 1/2" FIP gas valve	10
BS11515FLFIP	5/8" O.D. (15/16"-16) flare X 3/4" FIP gas valve	5
BS112FIP	1/2" FIP X 1/2" FIP gas valve - STD port	10
BS134FIP	3/4" FIP X 3/4" FIP gas valve - STD port	5

1" O.D. (3/4" I.D.) Coated gas connector

Connector with fittings		
Code	Description	Qty
SGC10DC12M34F34	3/4" I.D. SS coated gas connector - 3/4" MIP X 3/4" FIP X 12"	25
SGC10DC12M34M34	3/4" I.D. SS coated gas connector - 3/4" MIP X 3/4" MIP X 12"	25
SGC10DC18M34F34	3/4" I.D. SS coated gas connector - 3/4" MIP X 3/4" FIP X 18"	25
SGC10DC18M34M34	3/4" I.D. SS coated gas connector - 3/4" MIP X 3/4" MIP X 18"	25
SGC10DC24M34F34	3/4" I.D. SS coated gas connector - 3/4" MIP X 3/4" FIP X 24"	25
SGC10DC24M34M34	3/4" I.D. SS coated gas connector - 3/4" MIP X 3/4" MIP X 24"	25
SGC10DC36M34F34	3/4" I.D. SS coated gas connector - 3/4" MIP X 3/4" FIP X 36"	25
SGC10DC36M34M34	3/4" I.D. SS coated gas connector - 3/4" MIP X 3/4" MIP X 36"	25
SGC10DC48M34F34	3/4" I.D. SS coated gas connector - 3/4" MIP X 3/4" FIP X 48"	25
SGC10DC48M34M34	3/4" I.D. SS coated gas connector - 3/4" MIP X 3/4" MIP X 48"	25
Fittings		
PS8	1" O.D. (1-1/8"-16) flare X 3/4" FIP	250
PS17	1" O.D. (1-1/8"-16) flare X 3/4" MIP	200

FALCON GAS CONNECTING SOLUTIONS

1-1/4" O.D. (1" I.D.) Coated gas connector

Connector with fittings			
Code	Description		Qty
SGC114ODC18M1F1	1" I.D. SS coated gas connector – 1" MIP X 1" FIP X 18" high BTU		25
SGC114ODC18M1M1	1" I.D. SS coated gas connector – 1" MIP X 1" MIP X 18" high BTU		25
SGC114ODC24M1F1	1" I.D. SS coated gas connector – 1" MIP X 1" FIP X 24" high BTU		25
SGC114ODC24M1M1	1" I.D. SS coated gas connector – 1" MIP X 1" MIP X 24" high BTU		25
SGC114ODC36M1F1	1" I.D. SS coated gas connector – 1" MIP X 1" FIP X 36" high BTU		25
SGC114ODC36M1M1	1" I.D. SS coated gas connector – 1" MIP X 1" MIP X 36" high BTU		25
Fittings			
PS18	1-1/4" O.D. (1-3/8"-16) flare X 1" MIP		100
PS19	1-1/4" O.D. (1-3/8"-16) flare X 1" FIP		100

BTU Rating chart

Natural Gas

For natural gas (per ANSI Z21.24/CSA 6.10 & ANSI Z21.75/CSA 6.27) straight length capacity – BTU per hr 0.64 SG., 1,000 BTU per cu. ft. at 0.5 inch water column (124 Pa) pressure drop

Series	Nominal OD	Nominal I.D.	12"	18"	24"	30"	36"	48"	60"	72"
3/8"	3/8"	1/4"	48,000	43,800	40,000	36,400	33,400	28,300	24,900	23,100
1/2"	1/2"	3/8"	102,000	93,100	85,000	77,100	71,100	60,500	33,200	49,100
5/8"	5/8"	1/2"	180,000	164,200	150,000	136,000	125,000	106,000	93,200	86,000
1"	1"	3/4"	349,000	318,500	290,500	270,000	255,900	215,000	197,400	173,900
1-1/4"	1-1/4"	1"	698,000	637,000	581,800	545,200	515,900	442,700	398,900	347,800

Propane Gas

For propane gas (per ANSI Z21.24/CSA 6.10 & ANSI Z21.75/CSA 6.27) straight length capacity – BTU per hr 1.55 SG., 2,500 BTU per cu. ft. at 0.5 inch water column (124 Pa) pressure drop

Series	Nominal OD	Nominal I.D.	12"	18"	24"	30"	36"	48"	60"	72"
3/8"	3/8"	1/4"	76,800	70,080	64,000	58,240	53,440	45,280	39,840	36,960
1/2"	1/2"	3/8"	163,200	148,960	136,000	123,360	113,760	96,800	85,120	78,560
5/8"	5/8"	1/2"	288,000	262,720	240,000	217,600	200,000	169,600	149,120	137,600
1"	1"	3/4"	558,400	509,600	465,440	432,800	409,440	34,400	315,840	278,240
1-1/4"	1-1/4"	1"	1,116,800	1,019,200	930,880	872,320	825,440	708,320	638,240	556,480

The background of the page is a dark, grayscale image of a gas stove burner. A flame is visible, rising from the burner's jets. The image is slightly out of focus, creating a moody, industrial atmosphere.

Specialty Products

Thread Sealant

Solvent Cement

Water Heater Cleaners

Surge Protection



A CSW Industrials Company

SPECIALTY PRODUCTS

Complete water heater solutions.



SPECIALTY PRODUCTS

RectorSeal T Plus 2®

● White - PTFE enriched pipe thread sealant

Code	Description	Qty
23710	1-¾ oz.	24
23631	¼ pt.	24
23551	½ pt.	24
23431	1 pt.	12
23391	1 qt.	12
Canada		
23001	¼ pt.	12
23002	½ pt.	8
23435	1 pt.	12



FEATURES

- Non-setting
- Lead free
- 2 year shelf life
- Certified to NSF/ANSI/CAN 61

APPLICATION • Contains PTFE & synthetic fibers for superior performance • Can be pressurized immediately following application

RECOMMENDED FOR

- Galvanized Steel • Iron • Brass • Copper • Aluminum • Stainless Steel
- Polyethylene • RTRP • PVC • CPVC • ABS



Dura-Gold™ 627L

● Gold - Medium body CPVC solvent cement

Code	Description	Qty
55992	½ pt.	24
55998	1 pt.	12



pw-dwv-sw

FEATURES

- One-step, no primer needed*
- LEED compliant
- 2 year shelf life
- Meets ASTM F493 specs
- Low-VOC
- NSF approved for potable water

*when code allows

APPLICATION • Chlorinated polyvinyl chloride (CPVC) solvent cement for joining FlowGuard Gold® CPVC and fittings • For pipe up to 2" Schedule 40 and 1 1/4" Schedule 80

RECOMMENDED FOR

- All CPVC pipe • Potable water
- Pressure pipe • DWV systems

*FlowGuard Gold is a licensed trademark of The Lubrizol Corporation



WARNING • This product can expose you to chemicals including Nickel, which is known to the State of California to cause cancer, birth defects or other reproductive harm. For more information, go to www.P65Warnings.ca.gov.

SPECIALTY PRODUCTS

Nokorode® Aqua Flux™

Water washable flux

Code	Description	Qty
74047	4 oz.	24
74046	16 oz.	12



FEATURES

- Lead free
- Creamy, smooth paste
- Safe for potable water systems
- Certified to NSF/ANSI/CAN 61
- Complies with AB1953 requirements

APPLICATION • Superior wetting ability; Allows solder to flow easily and uniformly into joints • Lead free

RECOMMENDED FOR

- Solid wire solders 95/5, 60/40, 50/50 and 40/60
- For use with the silicone family of metal alloy products



Calci-free™

Tankless water heater flush

Code	Description	Qty
68708	1.2 lbs.	12



FEATURES

- Restores circulation in 20 min.
- More effective than vinegar
- Easy to use with no strong odor
- Cleans heat exchanger fast
- Biodegradable*

APPLICATION • Economical cleaner • Restores circulation and pressure in commercial and residential tankless water heaters • Cleans heating coils thoroughly

RECOMMENDED FOR • Routine cleaning to remove calcium and other solid deposits from heating coils in tankless water heaters



Calci-flush™

Standard tank water heater flush

Code	Description	Qty
68707	1 gallon	4



FEATURES

- Removes tank sediment
- Restores water temperature
- More effective than vinegar
- Easy to use with no strong odor
- Biodegradable*



WARNING: This product can expose you to chemicals including Methyl Methanesulfonate, which is known to the State of California to cause cancer, and Methanol, which is known to the State of California to cause birth defects or other reproductive harm. For more information, go to www.P65Warnings.ca.gov.

APPLICATION • Highly effective chemical cleaner to dissolve and flush standard water heaters and heat exchangers • Unique combination of cleaning and corrosion inhibiting components

RECOMMENDED FOR • Routine cleaning to remove calcium and other solid deposits from tanked water heaters

Adapter allows secure connection and quick application.



* Contains the best available biodegradable surfactants and detergents.

SPECIALTY PRODUCTS

TripleGuard **ACTIVE**

Automatic appliance leak shutoff

Code	Description	Qty
97720	Appliance Leak Shutoff	6

FEATURES

- Cold water shut off unit
- 10 ft cable
- Water leak detector
- Battery operated
- Easy installation
- Valve meets the requirements of NSF/ANSI 372

APPLICATION • Designed to protect homes from damages caused by a leaking water heater, washing machine or other appliance • When a leak is detected by the water leak detector, the automatic intake shutoff activates to close off the water source • No SMART monitoring capability



AUTOMATIC APPLIANCE WATER INTAKE SHUTOFF

WATER LEAK DETECTOR



RSH-50 DB

50kA Surge protective device with disconnect box

Code	Description	Qty
96417	RSH50 with fused disconnect box 30A	6
96418	RSH50 with fused disconnect box 60A	6
96419	RSH50 with non-fused disconnect box 60A	6

Application • Wall mount installation of RSH-50 (above)

Recommended for • Residential and commercial use • All single phase 120/240 VAC outside condensing units and indoor air handlers



FEATURES

- Fused & non fused option



All DB models include RSH-50 ▶ surge protection device (96415)



A CSW Industrials Company

HVAC & PLUMBING DIVISION

RectorSeal provides industry-leading digital and print support materials for its extensive chemical and mechanical solutions that include:

- Technical Product Information
- Marketing Support Materials
- Engaging Product Demonstration Videos
- Informative SDS and Product Data Sheets
- On-demand and Live Training and Webinars
- Learning Management System (LMS) support via RectorSeal Academy
- Informative Distributor and Sales Representative Tools
- Industry-related Tradeshow and Events Information

For complete details, visit www.rectorseal.com

For the latest product enhancements, news, and updated information, please follow RectorSeal's social media channels.



facebook.com/rectorseal



linkedin.com/company/rectorseal



twitter.com/rectorseal



instagram.com/rectorseal



youtube.com/rectorsealcorp

All information is believed to be current at the time of printing, but our policy is one of continuous development. RectorSeal makes no warranties, express or implied, as to its accuracy. RectorSeal reserves the right to discontinue, update or change the information at any time without notice or without incurring obligations.

RectorSeal® • 2601 Spenwick Drive, Houston, TX 77055, USA • 713-263-8001 • rectorseal.com

RectorSeal®, the logos and other trademarks are property of RectorSeal, LLC, its affiliates or its licensors and are protected by copyright, trademark and other intellectual property laws, and may not be used without permission. RectorSeal reserves the right to change specifications without prior notice. ©2023 RectorSeal. All rights reserved. R51040 0923